

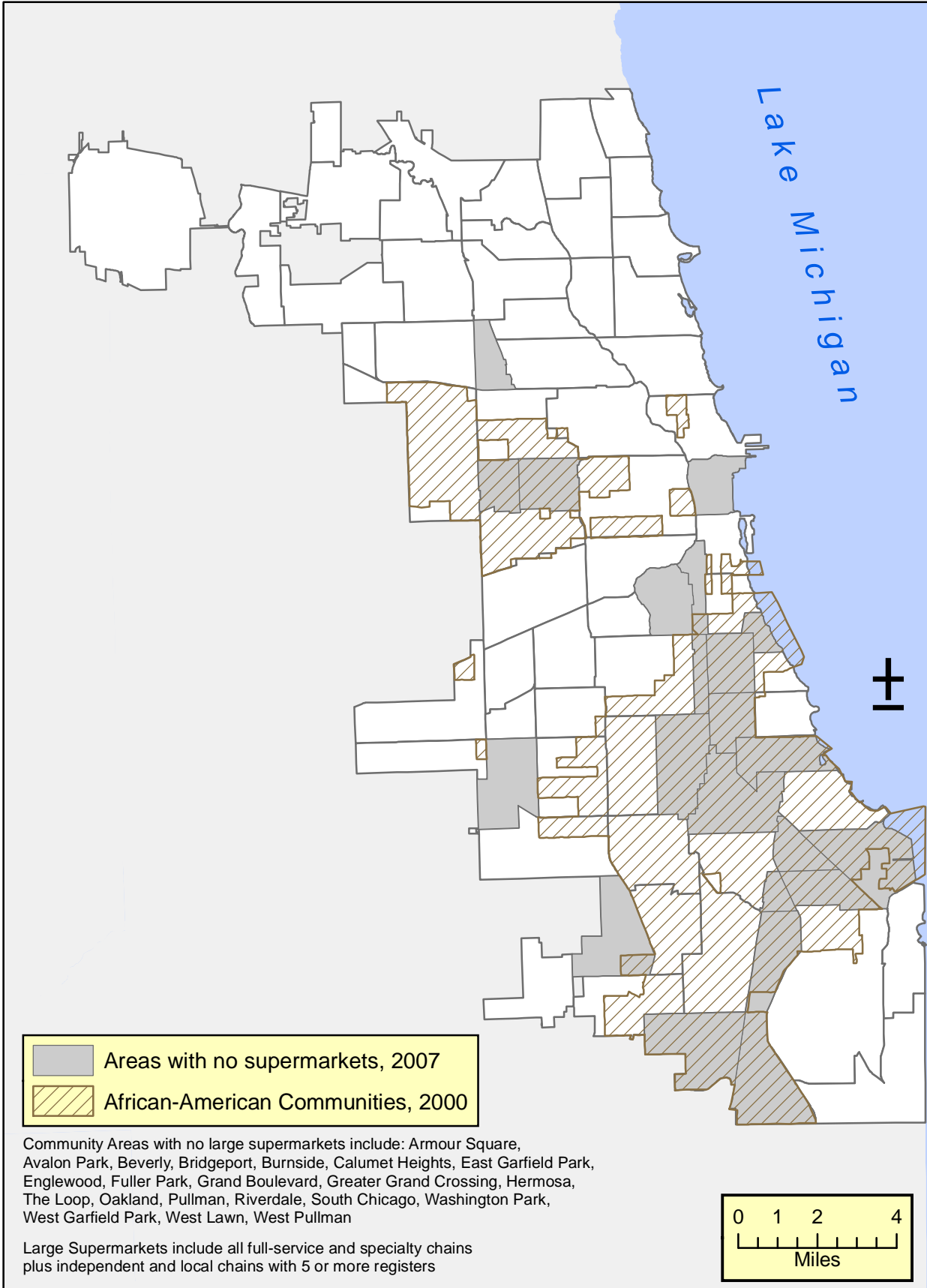
Finding Food in Chicago and the Suburbs
Regional and Chicago-wide Food Access Maps

Please contact Daniel Block at Chicago State University,
773-995-2310, or findingfood@sbcglobal.net, for more information.

April 10, 2008

This study was funded by the Searle Funds at the Chicago Community Trust. Funding for dissemination was received from the Michael and Susan Dell Foundation through the Consortium to Lower Obesity in Chicago Children at Children's Memorial Hospital.

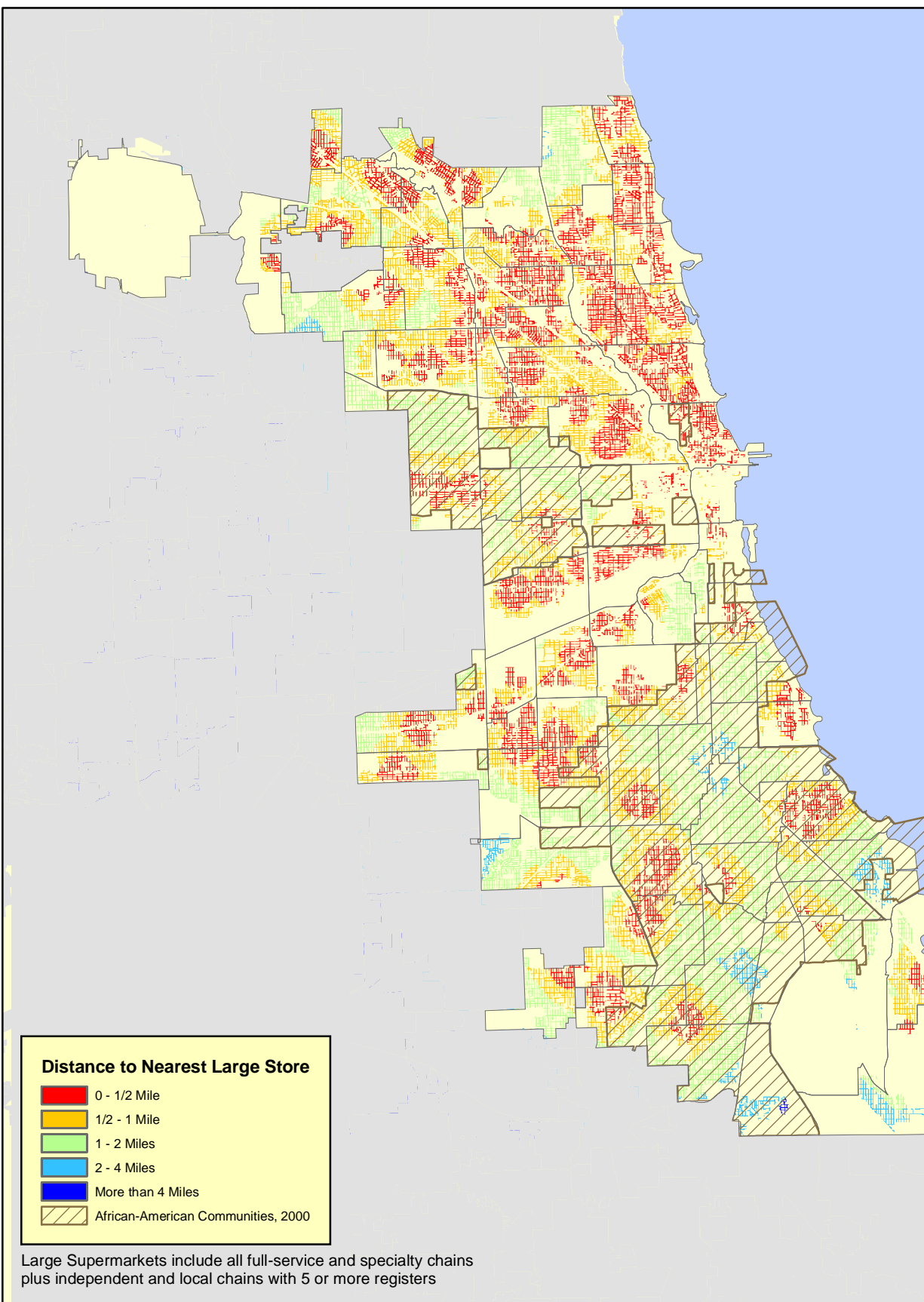
Map 1: Chicago Community Areas With No Supermarkets, 2007 and African-American Communities



Sources:
 Supermarkets: Company Websites and In-person Surveys, Summer, 2007
 Other Map Items: US Census Bureau, 2000; Chicago Metro Agency for Planning, 2001.

Northeastern Illinois Community Food Security Assessment
 Funded by the Searle Funds of the Chicago Community Trust
 Map and Research Completed by
 Chicago State University, Neighborhood Assistance Center
 April 2008

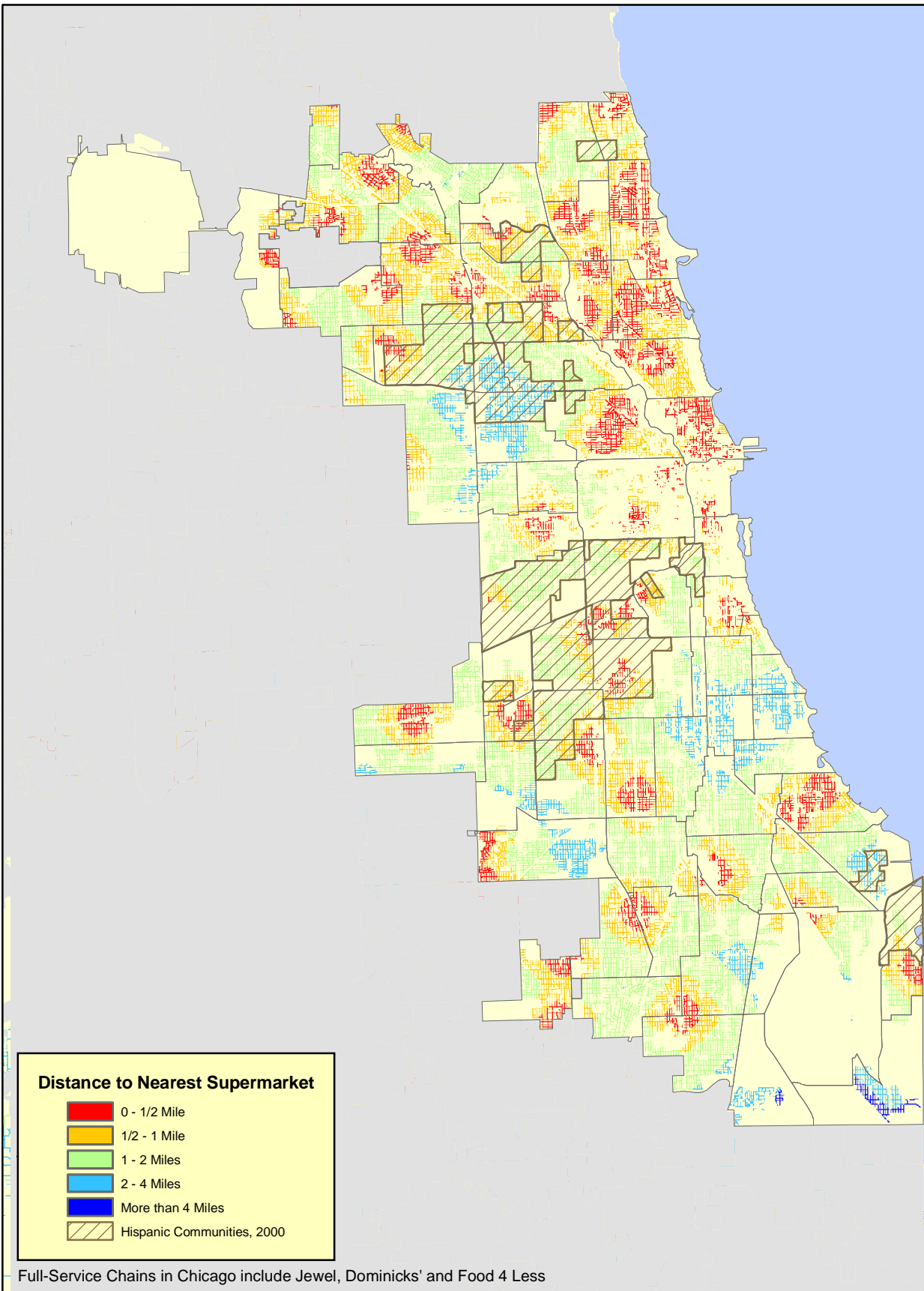
Distance to Nearest Large Supermarket and Predominantly African-American Communities Chicago, 2007



Sources:
Supermarkets: Company Websites and In-person Surveys, Summer, 2007
Other Map Items: US Census Bureau, 2000; Chicago Metro Agency for Planning, 2001.
Neighborhood Type Classes: University of Chicago Map Library

Northeastern Illinois Community Food Security Assessment
Funded by the Searle Funds of the Chicago Community Trust
Map and Research Completed by
Chicago State University, Neighborhood Assistance Center
October 2007

Map 4: Distance to Nearest Full-Service Chain Supermarket and Predominantly Hispanic Communities, Chicago, 2007

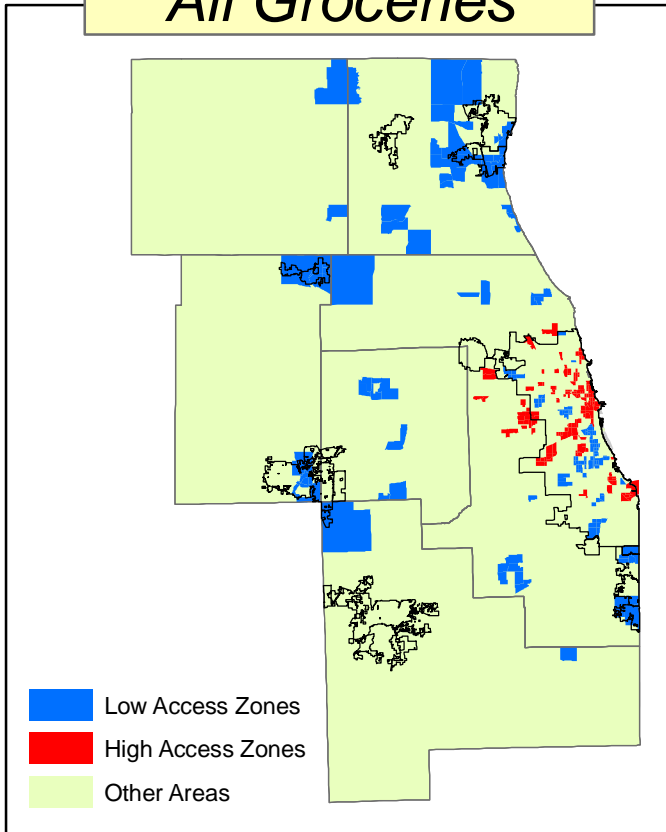


Sources:
Supermarkets: Company Websites and In-person Surveys, Summer, 2007
Other Map Items: US Census Bureau, 2000; Chicago Metro Agency for Planning, 2001.
Neighborhood Type Classes: University of Chicago Map Library

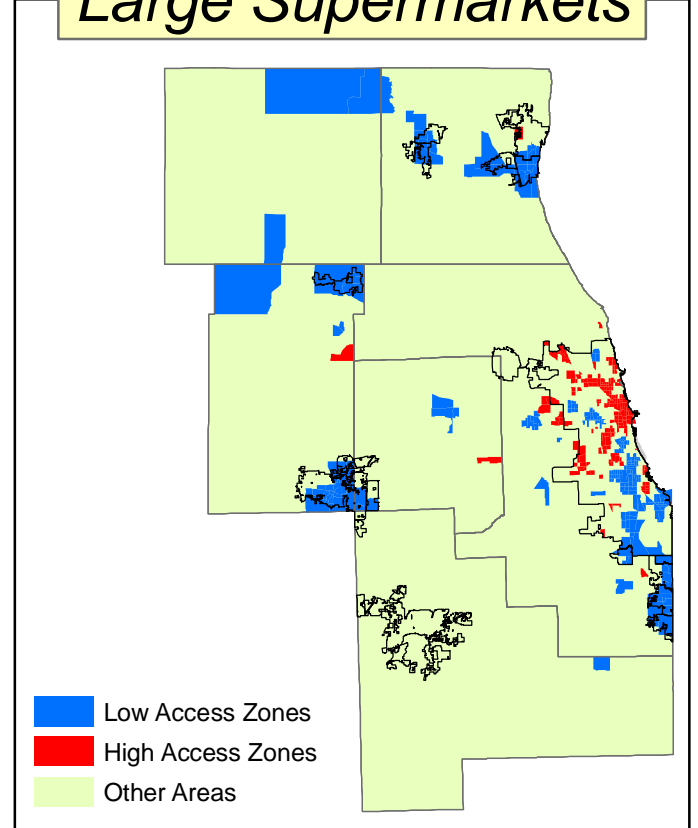
Northeastern Illinois Community Food Security Assessment
Funded by the Searle Funds of the Chicago Community Trust
Map and Research Completed by
Chicago State University, Neighborhood Assistance Center
October 2007

Map 5: High and Low Food Access Zones Chicago Metropolitan Area, 2007

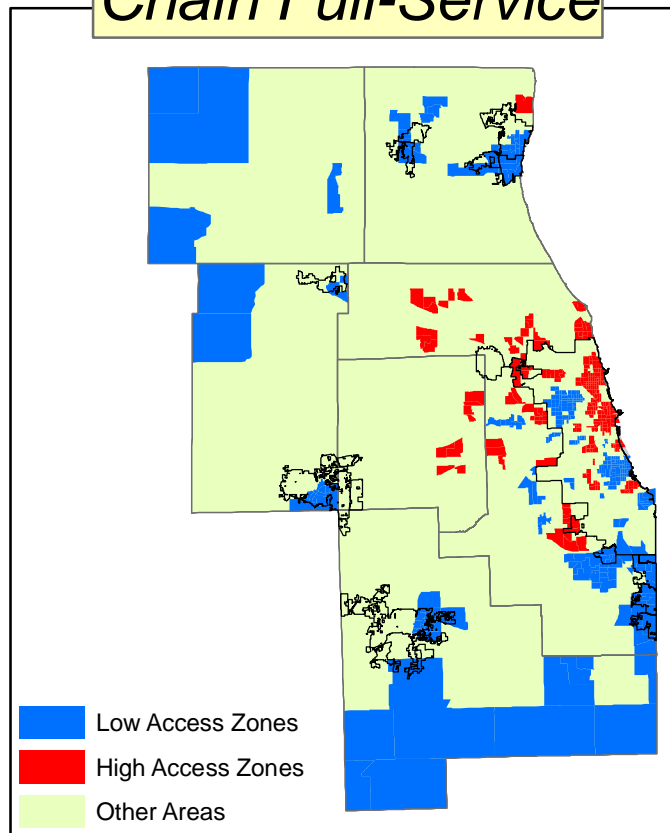
All Groceries



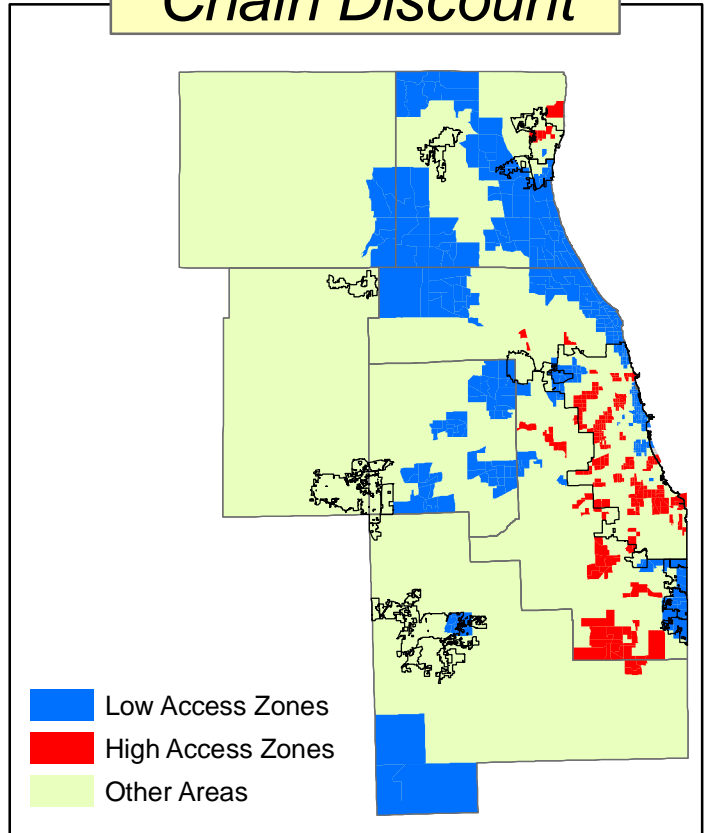
Large Supermarkets



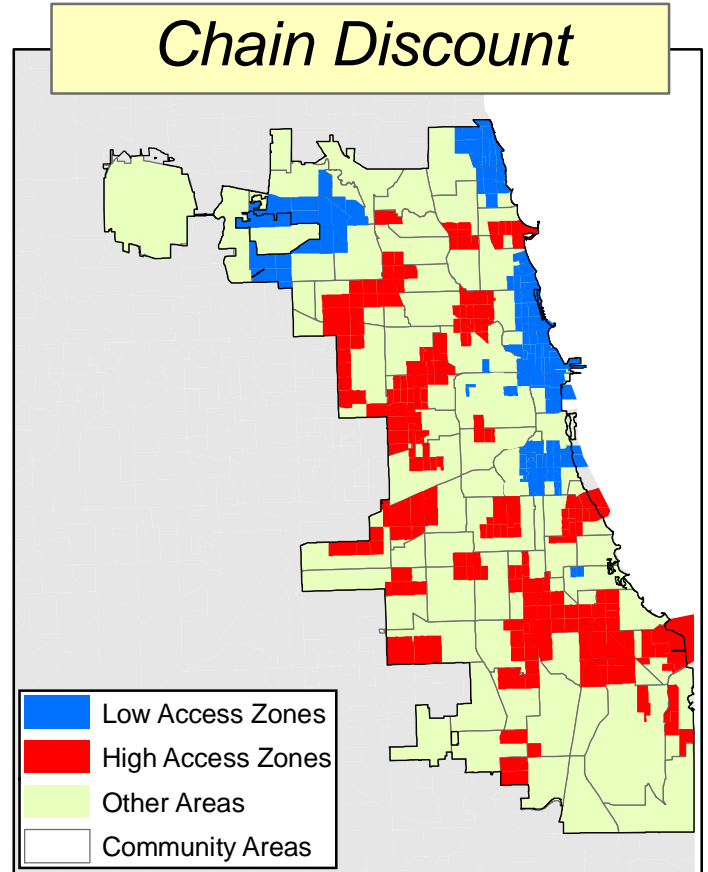
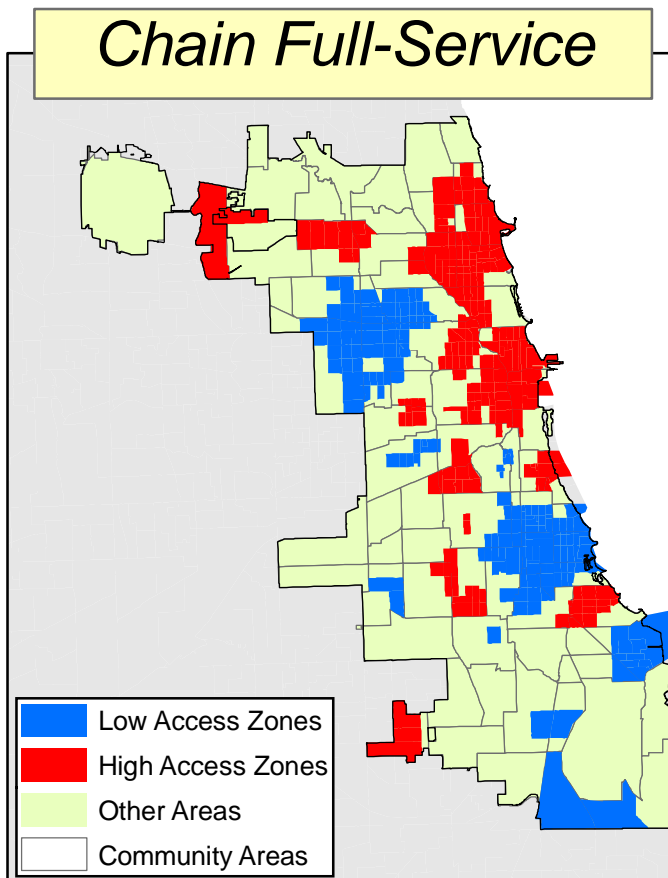
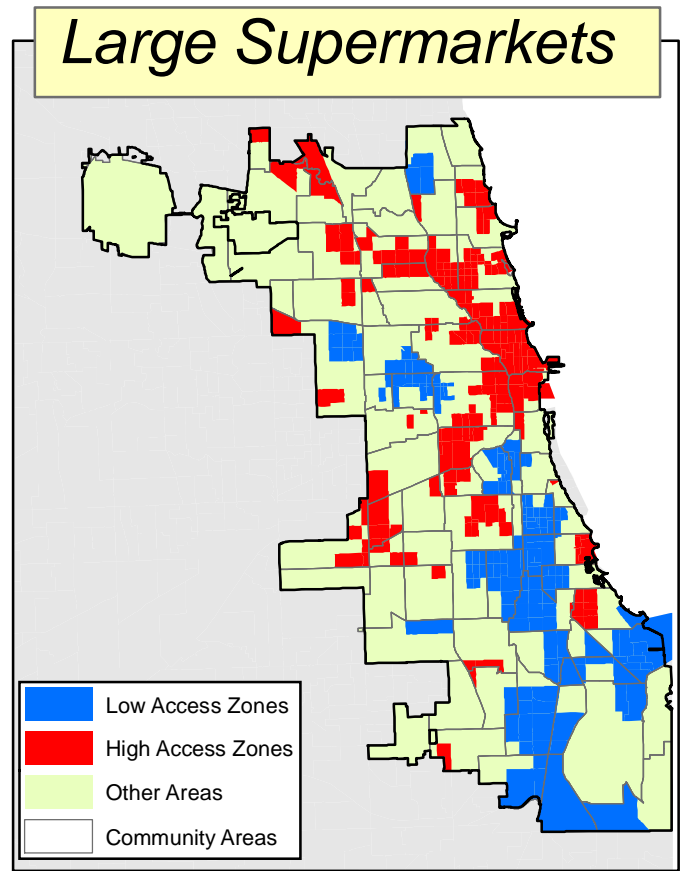
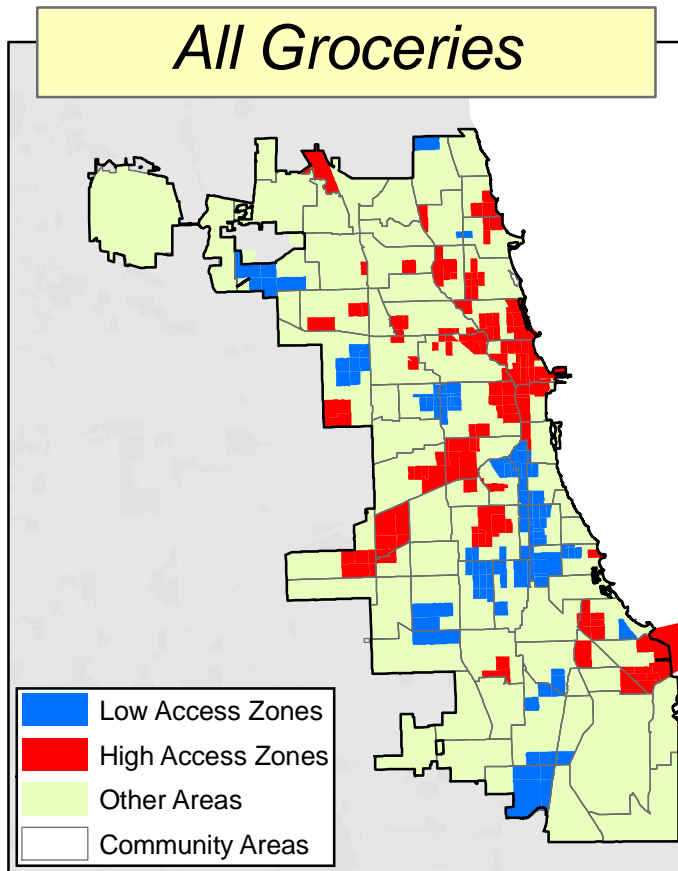
Chain Full-Service



Chain Discount

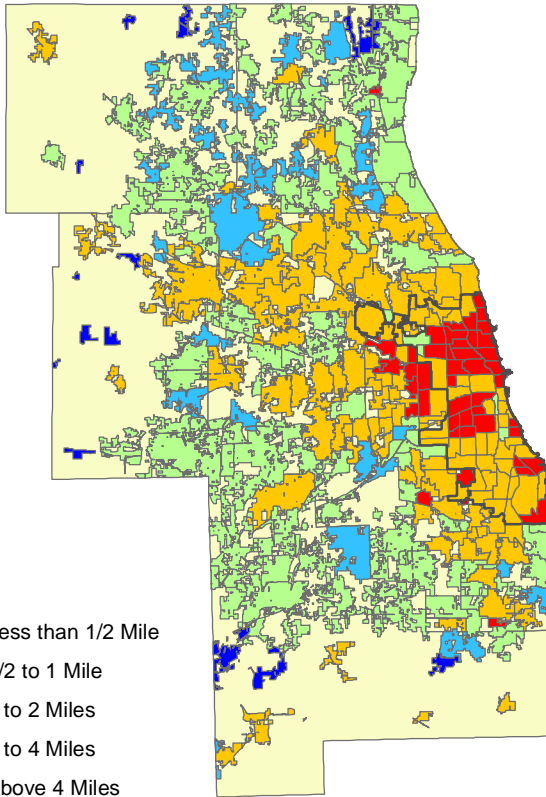


Map 6: High and Low Food Access Zones Chicago, 2007



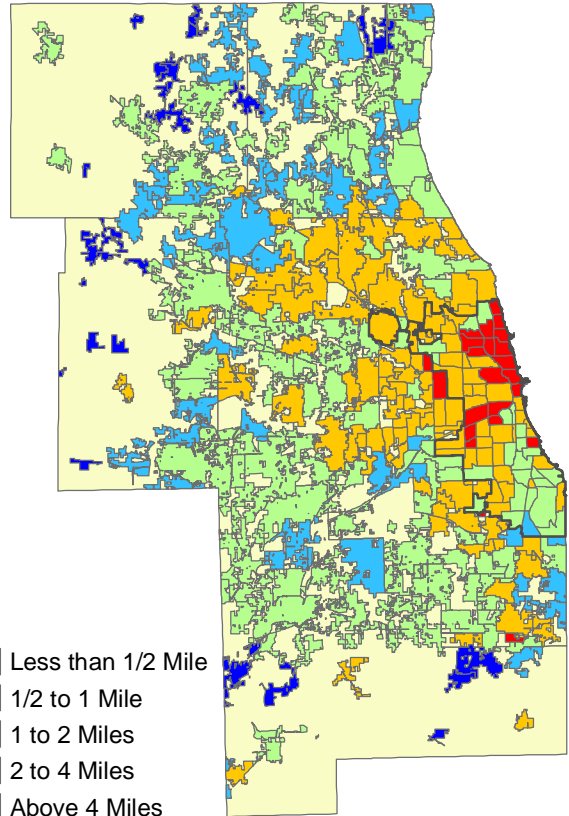
Map 2: Distance to Nearest Supermarket, 2007

All Groceries



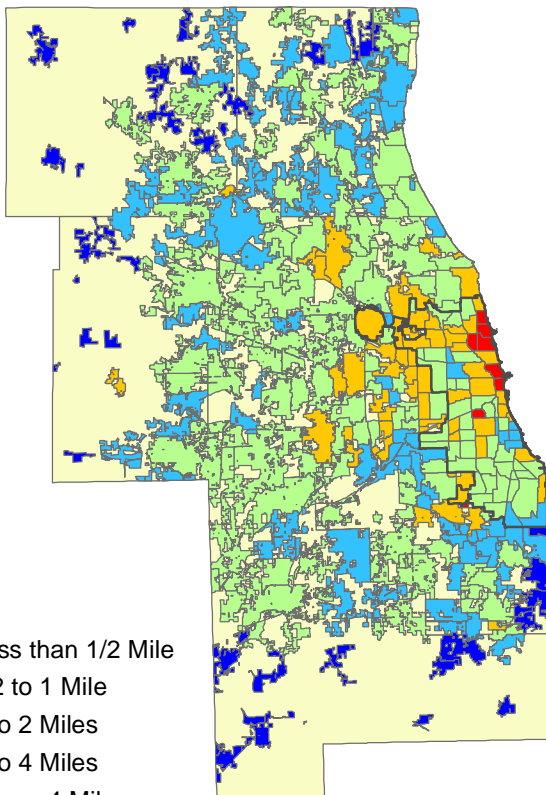
- Less than 1/2 Mile
- 1/2 to 1 Mile
- 1 to 2 Miles
- 2 to 4 Miles
- Above 4 Miles

Large Supermarkets



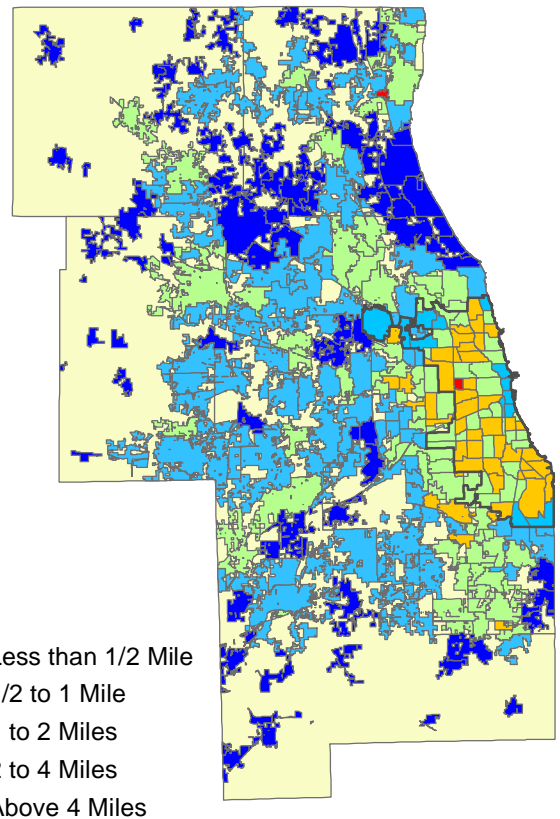
- Less than 1/2 Mile
- 1/2 to 1 Mile
- 1 to 2 Miles
- 2 to 4 Miles
- Above 4 Miles

Chain Full-Service



- Less than 1/2 Mile
- 1/2 to 1 Mile
- 1 to 2 Miles
- 2 to 4 Miles
- Above 4 Miles

Chain Discount

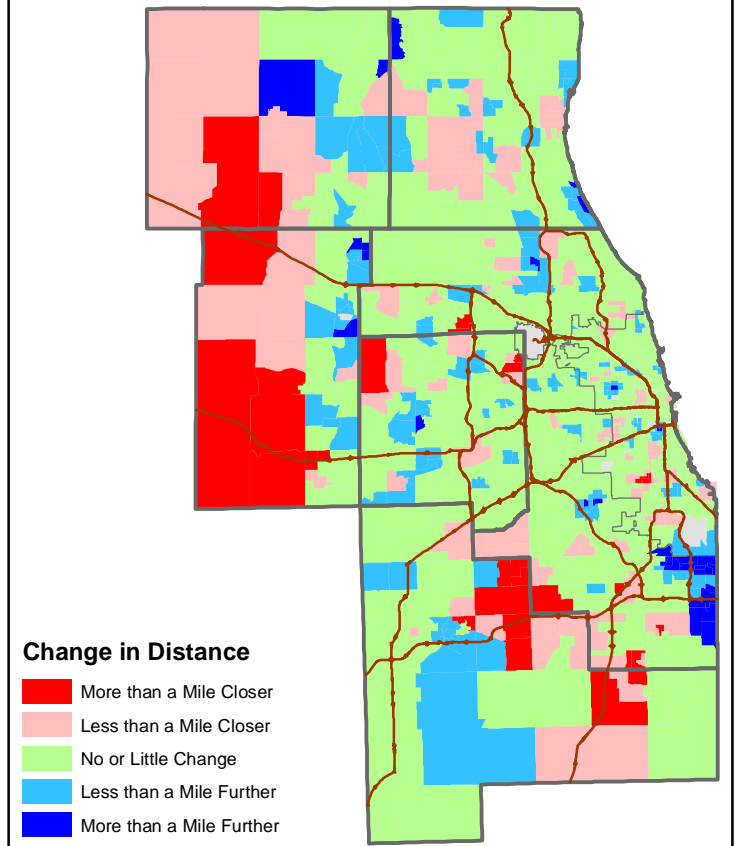


- Less than 1/2 Mile
- 1/2 to 1 Mile
- 1 to 2 Miles
- 2 to 4 Miles
- Above 4 Miles

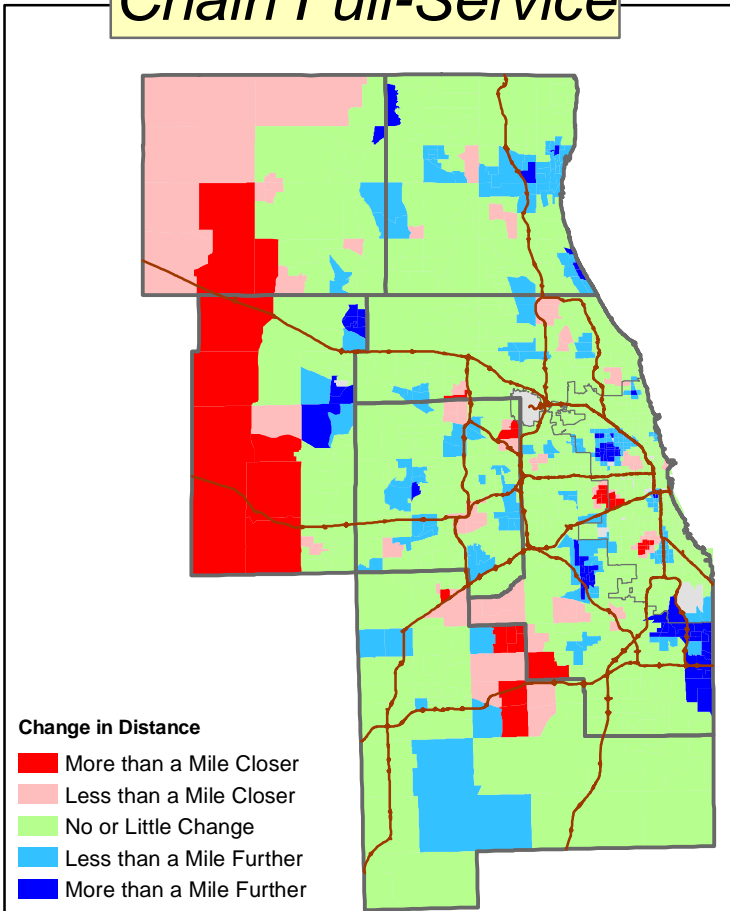
Map 7: Change in Distance to Nearest Chain Supermarket 2005-2007

Sources:
Supermarkets: Company Websites and In-person Surveys, Summer, 2007
Other Map Items: US Census Bureau, 2000; Chicago Metro Agency for Planning, 2001.
Northeastern Illinois Community Food Security Assessment,
Funded by the Searle Funds at the Chicago Community Trust
Map and Research Completed by Chicago State University, Neighborhood Assistance Center, April 2008

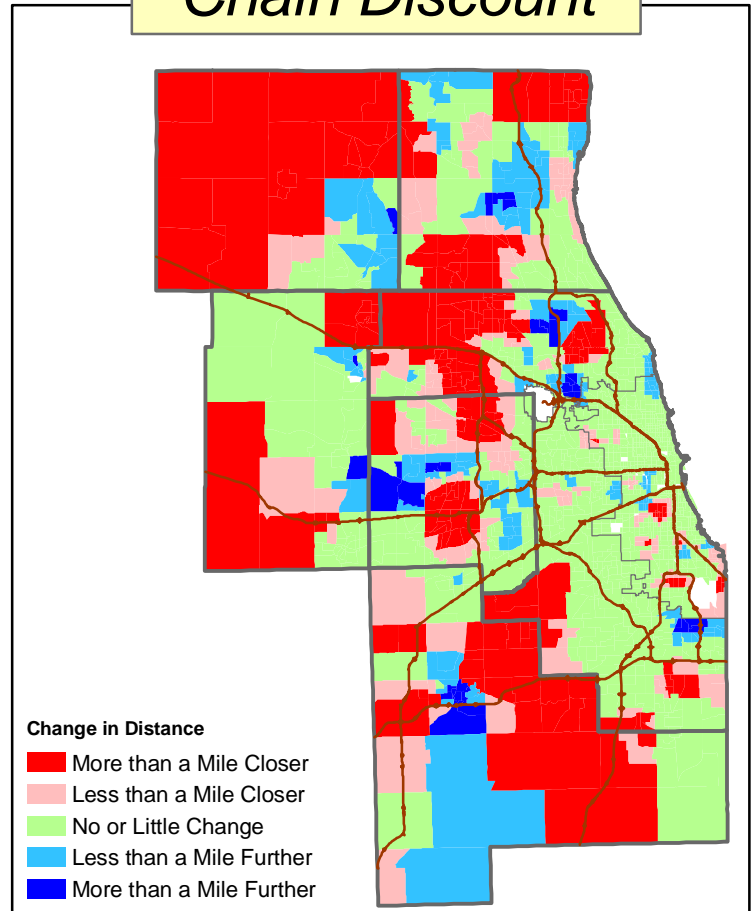
All Chain Supermarkets



Chain Full-Service

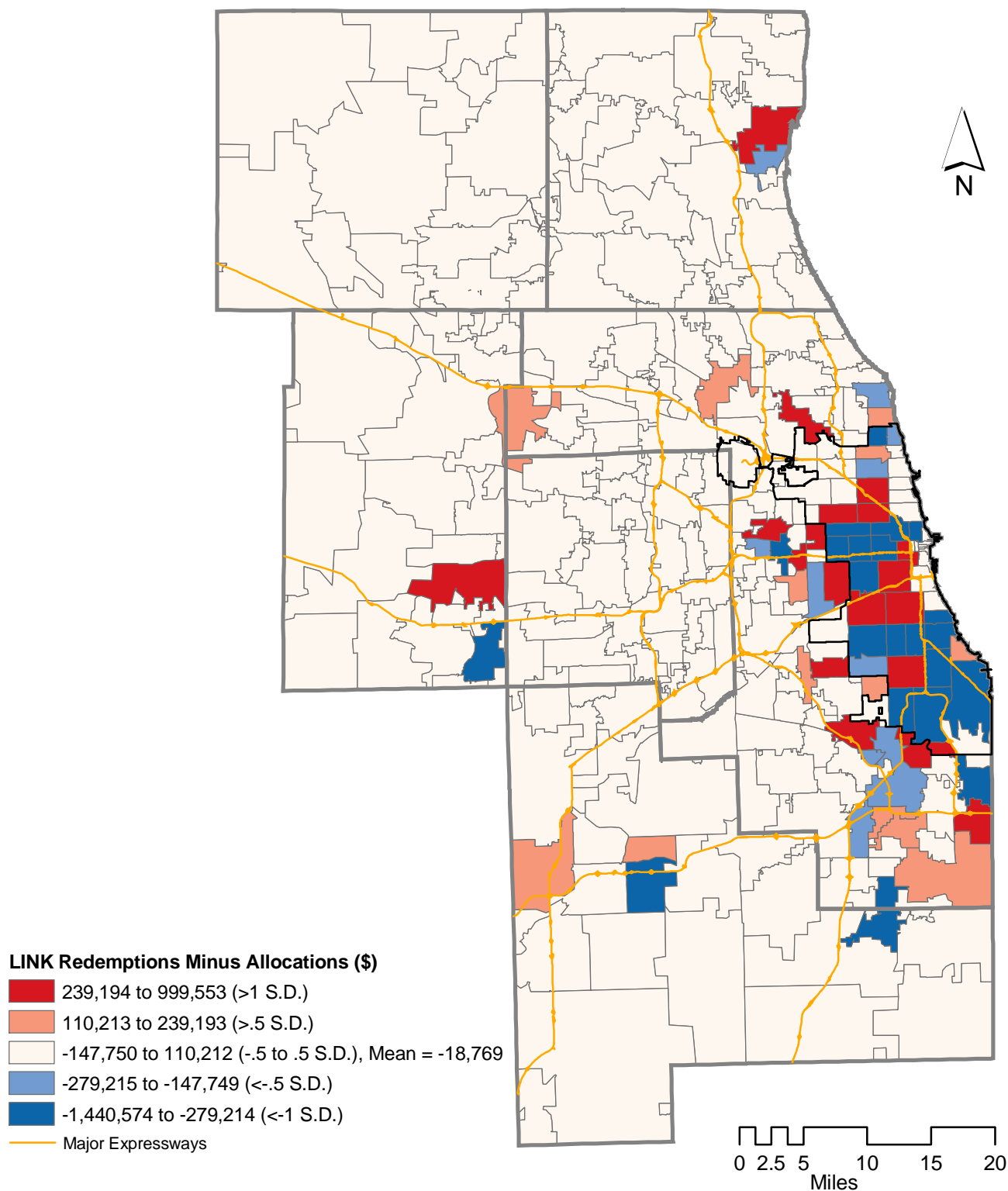


Chain Discount



Average LINK Redemptions Minus Allocations by ZIPCode

Chicago Metropolitan Area: February, July, October 2005



Map Completed January 2006
Chicago State University
Neighborhood Assistance Center
Sarah Dircks

Source: U.S. Department of Agriculture &
Illinois Department of Human Services
Northeastern Illinois Community Food Security Assessment
Funded by Searle Funds of the Chicago Community Trust