

Calumet Area Regional Planning



John A. Swanson

Executive Director

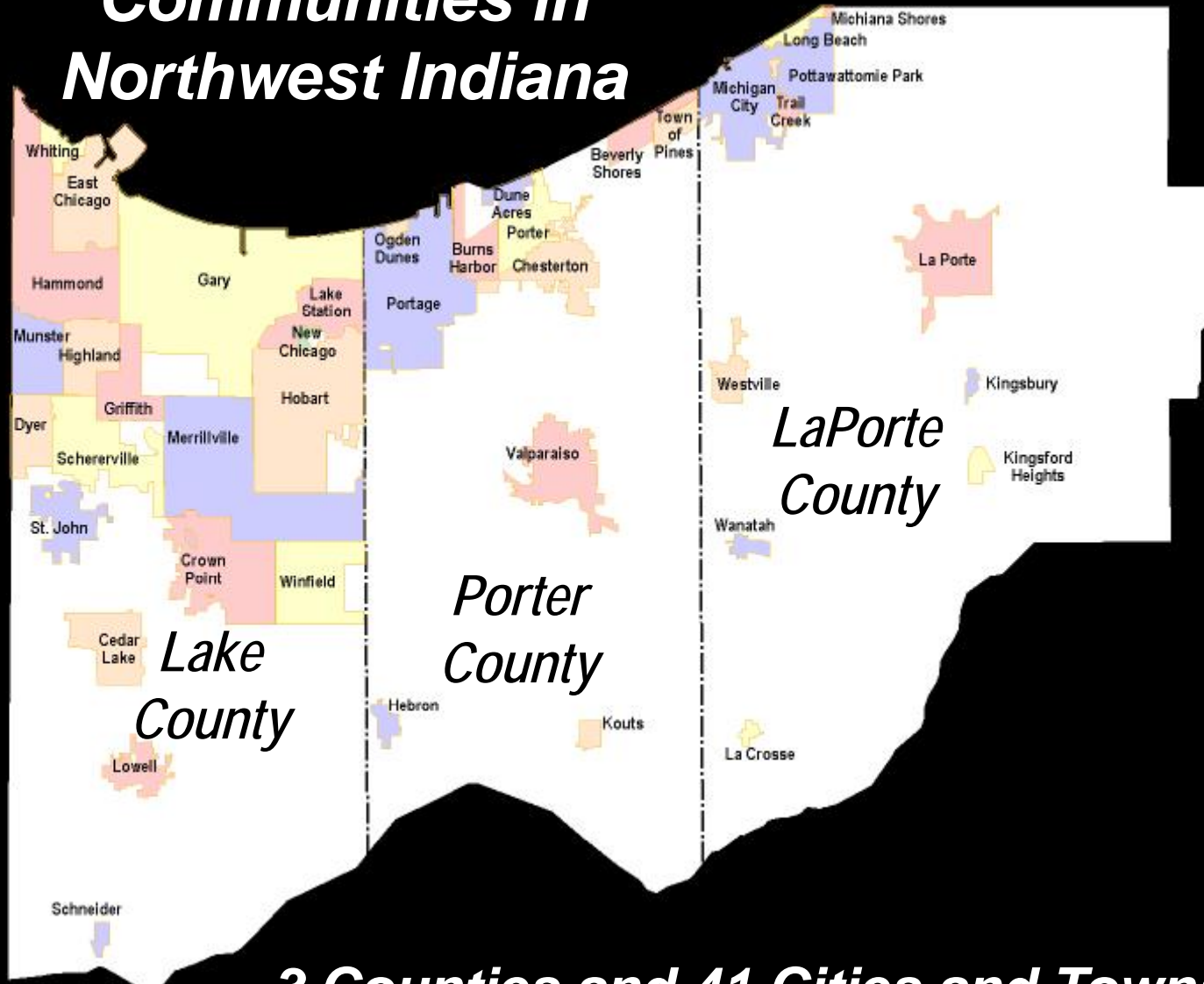
April 28, 2010

Calumet Summit 2010

What is NIRPC?

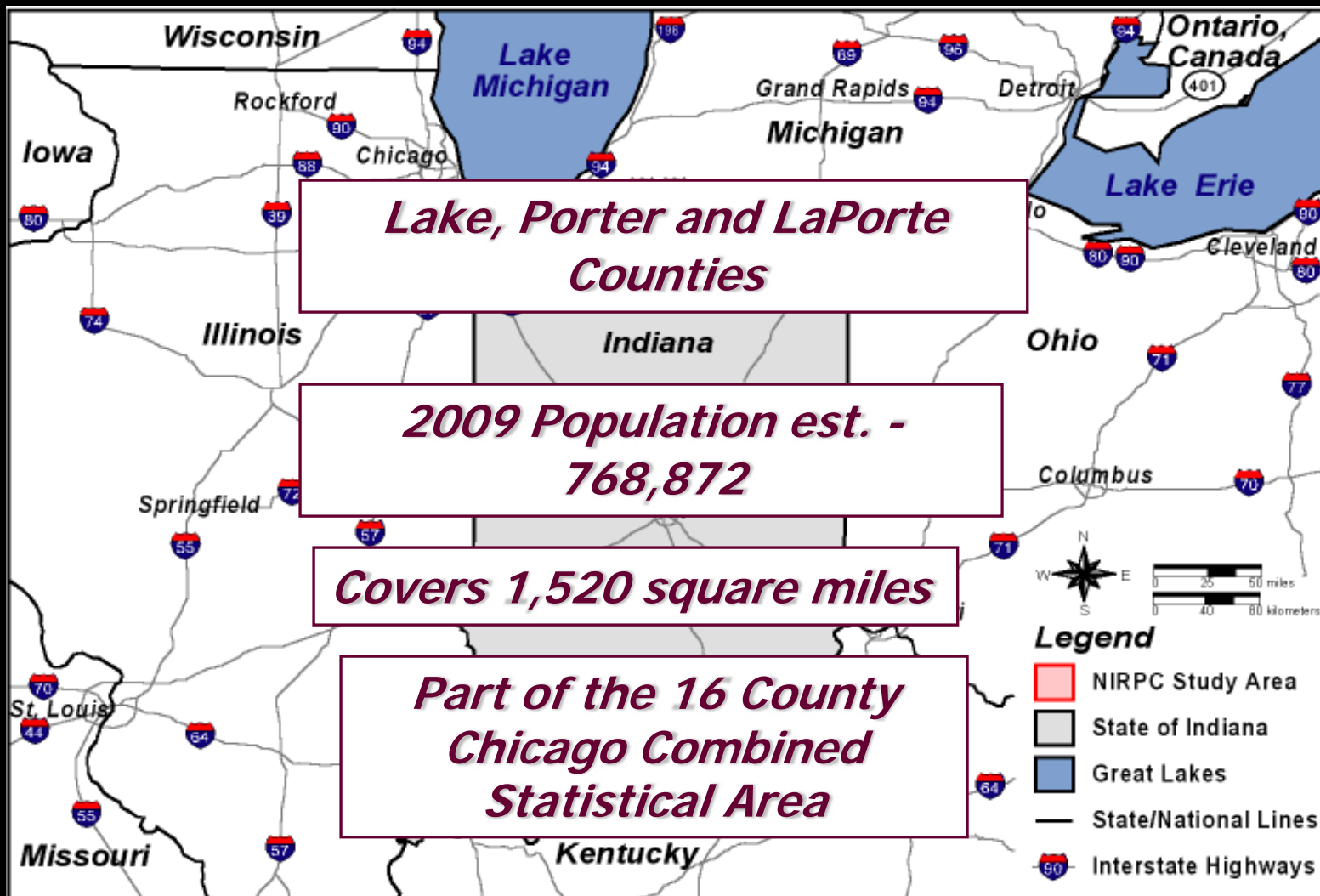
- **Northwestern Indiana Regional Planning Commission**
 - ✓ Created in 1965
 - ✓ Council of Governments
 - ✓ Metropolitan Planning Organization
- **Covers Lake, La Porte, and Porter Counties**

Communities in Northwest Indiana



3 Counties and 41 Cities and Towns

The Northwest Indiana Region





The Plan of Chicago 1909

by
Daniel H. Burnham
Edward H. Bennett

The Marquette Plan: A Vision for Lakeshore Reinvestment

HAMMOND LAKESHORE

The primary focus for projects in the Hammond Lakeshore sub-area is to make connections, both across land, regional, and transit corridors.

EAST CHICAGO CANALSIDE

The East Chicago Canalside sub-area demonstrates how we can leverage existing and new development to create quality of life improvements, such as a higher potential for new housing that could enable to create neighborhood, commercial, and cultural parks and a neighborhood industrial strip with public spaces, walk and bicycle paths.

GARY WEST LAKESHORE

The focus for this sub-area is the reconnection of Lake Michigan. Work will be done to provide the highest quality of life and the most vibrant and diverse city to live in.

GARY DOWNTOWN LAKESHORE

The focus for this sub-area is the reconnection of Lake Michigan. Work will be done to provide the highest quality of life and the most vibrant and diverse city to live in.

WHITING LAKESHORE

Whiting is located in the heart of the Chicago Lakeshore. It is a vibrant and growing community with a rich history and a strong sense of community. The focus for this sub-area is to improve the quality of life and the most vibrant and diverse city to live in.

PORTAGE LAKESHORE

This sub-area demonstrates how we can leverage existing and new development to create quality of life improvements, such as a higher potential for new housing that could enable to create neighborhood, commercial, and cultural parks and a neighborhood industrial strip with public spaces, walk and bicycle paths.

PORTER COUNTY WEST

The focus for this sub-area is to complete the Portage Trail. Work will be done to provide the highest quality of life and the most vibrant and diverse city to live in.

PORTER COUNTY EAST

The focus for this sub-area is to complete the Portage Trail. Work will be done to provide the highest quality of life and the most vibrant and diverse city to live in.

LA PORTE COUNTY

The focus for this sub-area is to complete the Portage Trail. Work will be done to provide the highest quality of life and the most vibrant and diverse city to live in.

Marquette Projects



4 **COMPLETED** **Portage Lakeshore**
This area is currently undeveloped. Through collaboration and strategic planning, leaders build public parks and provide an improved community enhanced planning and catalytic project as a catalyst for regional water park.

The Portage Lakeshore master plan, the sub-area's planning initiative provides a framework for future projects. The 150-acre Portage Lake will be partnered with local businesses, the City of Marquette, the Michigan Department of Natural Resources, the US Forest Service, and the Michigan Department of Transportation to create a world-class waterfront park.

This strategic project for this area is Portage Lakeshore Park. The park will be a recreational area with a paved walking path, and provide public access to the water through an interpretive agreement with the National Park Service. It will include interpretive exhibits, a playground, and a water park. The park will be developed in partnership with the City of Marquette, the Michigan Department of Natural Resources, the US Forest Service, and the Michigan Department of Transportation to create a world-class waterfront park.

2 **COMPLETED** **Develop and Rebuild the Michigan Blawie Trail**
Identify and build a 1.5-mile trail along the shore of Lake Michigan.

1 **FUNDED** **Whiting Lakeshore**
Whiting is fortunate to have established and protected Whiting Park, an wonderful waterfront park with direct access to the lake, which includes a playground, a picnic area, and a boat launch. The park is a great place to enjoy the water and enjoy the view. The park is a great place to enjoy the water and enjoy the view.

2 **FUNDED** **Hammond Lakeshore**
The City of Hammond through the Hammond Port Authority will be undertaking the Hammond Lakeshore. The \$31.46 million project will consist of public space improvements at the Lake Michigan shoreline including the new Secondary Suburban Infrastructure Improvements and Beachification Program, the Whiting Park and Recreation Park Area and further development of the George Lake Trail bridge over the water. The first phase of development scheduled to begin in Spring of 2023, is estimated to cost \$18.4 million.

4 **FUNDED** **Lakeshore Revitalization**
One of the most important projects for East Chicago, Gary.

4 **FUNDED** **Burns Harbor**
City Development

6 **FUNDED** **Marquette Park**
Plan entails improvements and rehabilitation for the Marquette park in collaboration with the Aquarium, Lake Street Beach and the Army Corps of Engineers by the Chicago School of the Dunes.

6 **FUNDED** **Indiana Dunes National Lakeshore**
Establish a cooperative water management plan between the Michigan Department of Natural Resources and the Indiana Dunes National Lakeshore.

7 **FUNDED** **Porter Gateway Project**
The port and pier area will be developed to provide a gateway to the city and provide a connection to regional trails.

1 **PLAN** **Hammond Lakeshore Trail**
Development of a multi-use trail from Hammond through the City of Hammond to the Lake Michigan shoreline. The trail will be a multi-use trail that will provide a connection to regional trails and provide a gateway to the city.

2 **PLAN** **Industrial Bridge and Beachfront Park**
Connects the industrial bridge to the beachfront park and provides a connection to regional trails.

5 **PLAN** **Water Lake Street**
Expand industrial bridge and beachfront park and provides a connection to regional trails.

6 **PLAN** **Whiting East Chicago Lakeshore**
A new location of developing a 100-acre waterfront park and beachfront park and provides a connection to regional trails.

3 **PLAN** **Anna Park Improvements**
Provide a connection to regional trails and provide a gateway to the city.

7 **PLAN** **Connected Water Feasibility Study**
Provide a connection to regional trails and provide a gateway to the city.

4 **PLAN** **Water Gary Lakeshore**
Provide a connection to regional trails and provide a gateway to the city.

8 **PLAN** **Industrial Infrastructure Consideration**
Provide a connection to regional trails and provide a gateway to the city.

9 **PLAN** **Canary Water Park**
Develop a water park and provide a connection to regional trails.

10 **PLAN** **Develop Gary Water Park**
Develop a water park and provide a connection to regional trails.

11 **PLAN** **Beverly Shores**
Develop a water park and provide a connection to regional trails.

12 **PLAN** **Michigan City**
Develop a water park and provide a connection to regional trails.

13 **PLAN** **Dunes National Park Connector**
Develop a water park and provide a connection to regional trails.

14 **PLAN** **Portage Lakeshore**
Develop a water park and provide a connection to regional trails.

15 **PLAN** **Implementation of Gary Gateway Trail**
Develop a water park and provide a connection to regional trails.

16 **PLAN** **Portage Lakeshore**
Develop a water park and provide a connection to regional trails.

17 **PLAN** **Indiana Dunes National Lakeshore**
Develop a water park and provide a connection to regional trails.

18 **PLAN** **Michigan City**
Develop a water park and provide a connection to regional trails.

19 **PLAN** **Dunes National Park Connector**
Develop a water park and provide a connection to regional trails.

20 **PLAN** **Portage Lakeshore**
Develop a water park and provide a connection to regional trails.

21 **PLAN** **Indiana Dunes National Lakeshore**
Develop a water park and provide a connection to regional trails.

22 **PLAN** **Michigan City**
Develop a water park and provide a connection to regional trails.

23 **PLAN** **Dunes National Park Connector**
Develop a water park and provide a connection to regional trails.

24 **PLAN** **Portage Lakeshore**
Develop a water park and provide a connection to regional trails.

25 **PLAN** **Indiana Dunes National Lakeshore**
Develop a water park and provide a connection to regional trails.

26 **PLAN** **Michigan City**
Develop a water park and provide a connection to regional trails.

27 **PLAN** **Dunes National Park Connector**
Develop a water park and provide a connection to regional trails.

28 **PLAN** **Portage Lakeshore**
Develop a water park and provide a connection to regional trails.

29 **PLAN** **Indiana Dunes National Lakeshore**
Develop a water park and provide a connection to regional trails.

30 **PLAN** **Michigan City**
Develop a water park and provide a connection to regional trails.

31 **PLAN** **Dunes National Park Connector**
Develop a water park and provide a connection to regional trails.

1 **FUTURE** **Lakeshore Sanctuary**
Create a water park and provide a connection to regional trails.

2 **FUTURE** **Portage Lakeshore**
Develop a water park and provide a connection to regional trails.

3 **FUTURE** **Indiana Dunes National Lakeshore**
Develop a water park and provide a connection to regional trails.

4 **FUTURE** **Michigan City**
Develop a water park and provide a connection to regional trails.

5 **FUTURE** **Dunes National Park Connector**
Develop a water park and provide a connection to regional trails.

6 **FUTURE** **Portage Lakeshore**
Develop a water park and provide a connection to regional trails.

7 **FUTURE** **Indiana Dunes National Lakeshore**
Develop a water park and provide a connection to regional trails.

8 **FUTURE** **Michigan City**
Develop a water park and provide a connection to regional trails.

9 **FUTURE** **Portage Lakeshore**
Develop a water park and provide a connection to regional trails.

10 **FUTURE** **Indiana Dunes National Lakeshore**
Develop a water park and provide a connection to regional trails.

11 **FUTURE** **Michigan City**
Develop a water park and provide a connection to regional trails.

12 **FUTURE** **Dunes National Park Connector**
Develop a water park and provide a connection to regional trails.

13 **FUTURE** **Portage Lakeshore**
Develop a water park and provide a connection to regional trails.

14 **FUTURE** **Indiana Dunes National Lakeshore**
Develop a water park and provide a connection to regional trails.

15 **FUTURE** **Michigan City**
Develop a water park and provide a connection to regional trails.

16 **FUTURE** **Dunes National Park Connector**
Develop a water park and provide a connection to regional trails.

17 **FUTURE** **Portage Lakeshore**
Develop a water park and provide a connection to regional trails.

18 **FUTURE** **Indiana Dunes National Lakeshore**
Develop a water park and provide a connection to regional trails.

19 **FUTURE** **Michigan City**
Develop a water park and provide a connection to regional trails.

20 **FUTURE** **Dunes National Park Connector**
Develop a water park and provide a connection to regional trails.

21 **FUTURE** **Portage Lakeshore**
Develop a water park and provide a connection to regional trails.

22 **FUTURE** **Indiana Dunes National Lakeshore**
Develop a water park and provide a connection to regional trails.

23 **FUTURE** **Michigan City**
Develop a water park and provide a connection to regional trails.

24 **FUTURE** **Dunes National Park Connector**
Develop a water park and provide a connection to regional trails.

8 **FUTURE** **Grand Canyon Park**
Develop a water park and provide a connection to regional trails.

16 **FUTURE** **Portage Lakeshore**
Develop a water park and provide a connection to regional trails.

17 **FUTURE** **Indiana Dunes National Lakeshore**
Develop a water park and provide a connection to regional trails.

18 **FUTURE** **Michigan City**
Develop a water park and provide a connection to regional trails.

9 **FUTURE** **Portage Lakeshore**
Develop a water park and provide a connection to regional trails.

10 **FUTURE** **Indiana Dunes National Lakeshore**
Develop a water park and provide a connection to regional trails.

11 **FUTURE** **Michigan City**
Develop a water park and provide a connection to regional trails.

12 **FUTURE** **Dunes National Park Connector**
Develop a water park and provide a connection to regional trails.

13 **FUTURE** **Portage Lakeshore**
Develop a water park and provide a connection to regional trails.

14 **FUTURE** **Indiana Dunes National Lakeshore**
Develop a water park and provide a connection to regional trails.

15 **FUTURE** **Michigan City**
Develop a water park and provide a connection to regional trails.

16 **FUTURE** **Dunes National Park Connector**
Develop a water park and provide a connection to regional trails.

17 **FUTURE** **Portage Lakeshore**
Develop a water park and provide a connection to regional trails.

18 **FUTURE** **Indiana Dunes National Lakeshore**
Develop a water park and provide a connection to regional trails.

19 **FUTURE** **Michigan City**
Develop a water park and provide a connection to regional trails.

20 **FUTURE** **Dunes National Park Connector**
Develop a water park and provide a connection to regional trails.

21 **FUTURE** **Portage Lakeshore**
Develop a water park and provide a connection to regional trails.

22 **FUTURE** **Indiana Dunes National Lakeshore**
Develop a water park and provide a connection to regional trails.

23 **FUTURE** **Michigan City**
Develop a water park and provide a connection to regional trails.

24 **FUTURE** **Dunes National Park Connector**
Develop a water park and provide a connection to regional trails.

25 **FUTURE** **Portage Lakeshore**
Develop a water park and provide a connection to regional trails.

26 **FUTURE** **Indiana Dunes National Lakeshore**
Develop a water park and provide a connection to regional trails.

27 **FUTURE** **Michigan City**
Develop a water park and provide a connection to regional trails.

28 **FUTURE** **Dunes National Park Connector**
Develop a water park and provide a connection to regional trails.

16 **FUTURE** **Portage Lakeshore**
Develop a water park and provide a connection to regional trails.

17 **FUTURE** **Indiana Dunes National Lakeshore**
Develop a water park and provide a connection to regional trails.

18 **FUTURE** **Michigan City**
Develop a water park and provide a connection to regional trails.

19 **FUTURE** **Dunes National Park Connector**
Develop a water park and provide a connection to regional trails.

20 **FUTURE** **Portage Lakeshore**
Develop a water park and provide a connection to regional trails.

21 **FUTURE** **Indiana Dunes National Lakeshore**
Develop a water park and provide a connection to regional trails.

22 **FUTURE** **Michigan City**
Develop a water park and provide a connection to regional trails.

23 **FUTURE** **Dunes National Park Connector**
Develop a water park and provide a connection to regional trails.

24 **FUTURE** **Portage Lakeshore**
Develop a water park and provide a connection to regional trails.

25 **FUTURE** **Indiana Dunes National Lakeshore**
Develop a water park and provide a connection to regional trails.

26 **FUTURE** **Michigan City**
Develop a water park and provide a connection to regional trails.

27 **FUTURE** **Dunes National Park Connector**
Develop a water park and provide a connection to regional trails.

28 **FUTURE** **Portage Lakeshore**
Develop a water park and provide a connection to regional trails.

29 **FUTURE** **Indiana Dunes National Lakeshore**
Develop a water park and provide a connection to regional trails.

30 **FUTURE** **Michigan City**
Develop a water park and provide a connection to regional trails.

31 **FUTURE** **Dunes National Park Connector**
Develop a water park and provide a connection to regional trails.

32 **FUTURE** **Portage Lakeshore**
Develop a water park and provide a connection to regional trails.

33 **FUTURE** **Indiana Dunes National Lakeshore**
Develop a water park and provide a connection to regional trails.

34 **FUTURE** **Michigan City**
Develop a water park and provide a connection to regional trails.

35 **FUTURE** **Dunes National Park Connector**
Develop a water park and provide a connection to regional trails.

36 **FUTURE** **Portage Lakeshore**
Develop a water park and provide a connection to regional trails.

37 **FUTURE** **Indiana Dunes National Lakeshore**
Develop a water park and provide a connection to regional trails.

38 **FUTURE** **Michigan City**
Develop a water park and provide a connection to regional trails.

39 **FUTURE** **Dunes National Park Connector**
Develop a water park and provide a connection to regional trails.

25 **FUTURE** **Portage Lakeshore**
Develop a water park and provide a connection to regional trails.

26 **FUTURE** **Indiana Dunes National Lakeshore**
Develop a water park and provide a connection to regional trails.

27 **FUTURE** **Michigan City**
Develop a water park and provide a connection to regional trails.

28 **FUTURE** **Dunes National Park Connector**
Develop a water park and provide a connection to regional trails.

29 **FUTURE** **Portage Lakeshore**
Develop a water park and provide a connection to regional trails.

30 **FUTURE** **Indiana Dunes National Lakeshore**
Develop a water park and provide a connection to regional trails.

31 **FUTURE** **Michigan City**
Develop a water park and provide a connection to regional trails.

32 **FUTURE** **Dunes National Park Connector**
Develop a water park and provide a connection to regional trails.

33 **FUTURE** **Portage Lakeshore**
Develop a water park and provide a connection to regional trails.

34 **FUTURE** **Indiana Dunes National Lakeshore**
Develop a water park and provide a connection to regional trails.

35 **FUTURE** **Michigan City**
Develop a water park and provide a connection to regional trails.

36 **FUTURE** **Dunes National Park Connector**
Develop a water park and provide a connection to regional trails.

37 **FUTURE** **Portage Lakeshore**
Develop a water park and provide a connection to regional trails.

38 **FUTURE** **Indiana Dunes National Lakeshore**
Develop a water park and provide a connection to regional trails.

39 **FUTURE** **Michigan City**
Develop a water park and provide a connection to regional trails.

40 **FUTURE** **Dunes National Park Connector**
Develop a water park and provide a connection to regional trails.

41 **FUTURE** **Portage Lakeshore**
Develop a water park and provide a connection to regional trails.

42 **FUTURE** **Indiana Dunes National Lakeshore**
Develop a water park and provide a connection to regional trails.

43 **FUTURE** **Michigan City**
Develop a water park and provide a connection to regional trails.

44 **FUTURE** **Dunes National Park Connector**
Develop a water park and provide a connection to regional trails.

45 **FUTURE** **Portage Lakeshore**
Develop a water park and provide a connection to regional trails.

46 **FUTURE** **Indiana Dunes National Lakeshore**
Develop a water park and provide a connection to regional trails.

47 **FUTURE** **Michigan City**
Develop a water park and provide a connection to regional trails.

48 **FUTURE** **Dunes National Park Connector**
Develop a water park and provide a connection to regional trails.

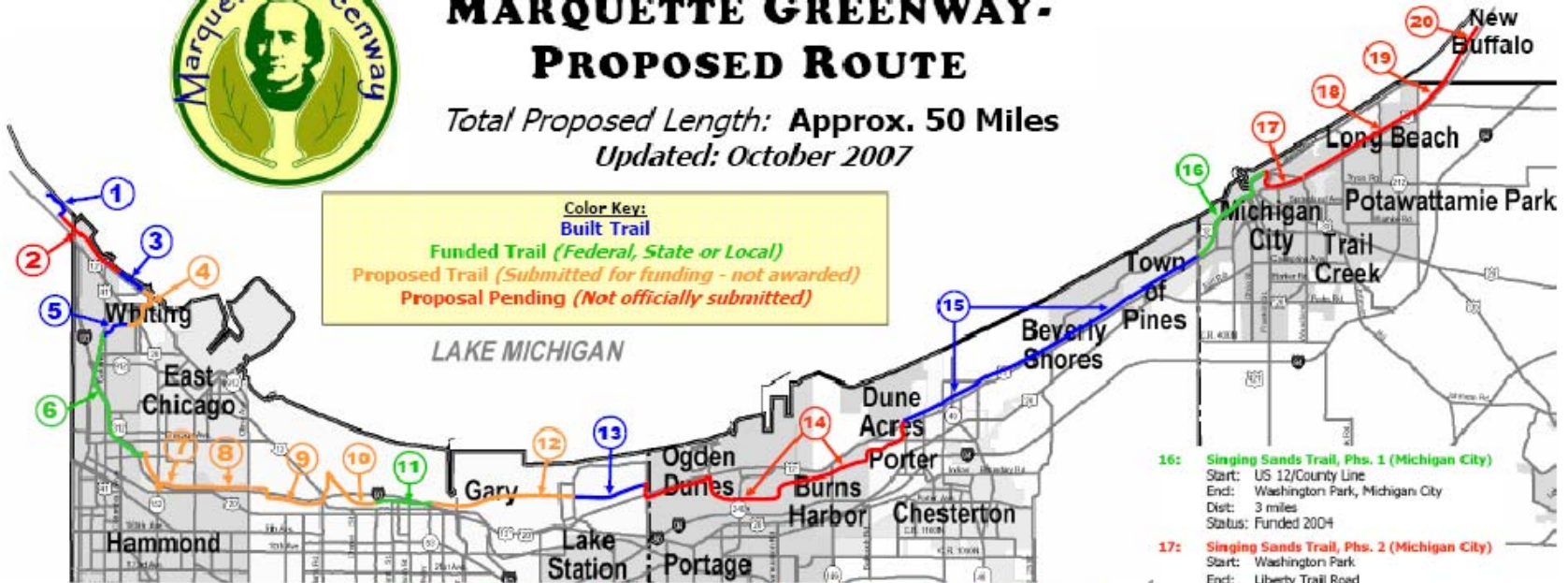
Marquette Greenway Trail



MARQUETTE GREENWAY- PROPOSED ROUTE

Total Proposed Length: **Approx. 50 Miles**
Updated: **October 2007**

Color Key:
Blue Built Trail
Green Funded Trail (Federal, State or Local)
Orange Proposed Trail (Submitted for funding - not awarded)
Red Proposal Pending (Not officially submitted)



All distances are approximate!

- 1: Calumet Park Trail**
Existing to proposed link to Lakefront Trail
- 2: Hammond Marina/State Line Link**
Start: Calumet Park
End: Whihala Beach County Park
Dist: 1.6 miles
- 3: Whihala Beach Bark (Lake Co. Parks)**
Start: Horseshoe Casino
End: Whiting Park
Dist: 0.7 miles
- 4: Whiting East Side Trail (Whiting)**
Start: Whihala Park
End: George Lake Trail
Dist: 1.5 miles
- 5: George Lake Trail**
Start: East side of Lake
End: Calumet & Sheffield (Environ. Center)
Dist: 0.9 miles

- 6: Calumet Trail Hammond, Phase 1**
Start: Calumet & Sheffield
End: White Oak Blvd. in East Chicago
Dist: 4 miles
Status: Funded 2005
- 7: Grand Calumet Trail East Chicago, Phase 3**
Start: White Oak Blvd.
End: Kennedy Avenue
Dist: 2 miles
- 8: Grand Calumet Trail Hammond, Phase 7**
Start: Kennedy Avenue
End: Cline Avenue
Dist: 1.5 miles
- 9: Grand Calumet River Trail Gary, Phase 3**
Start: Cline Avenue
End: Clark Street
Dist: 2 miles
- 10: Grand Calumet River Trail Gary, Phase 2**
Start: Clark Street
End: Bridge Street
Dist: 3 miles

- 11: Grand Calumet River Trail Gary, Phase 1**
Start: Bridge Street
End: Broadway
Dist: 2 miles
Status: Funded 2005
- 12: Marquette Trail, Phase 2 (National Park)**
Start: Broadway
End: Grand Avenue (Miller)
Dist: 3.5 miles
- 13: Marquette Trail, Phase 1 (National Park)**
Start: Grand Avenue
End: County Line Road (at West Beach)
Dist: 2 miles
- 14: Dunes National Park Connector (National Park Service/Portage)**
Start: County Line Road
End: Mineral Springs Road (Calumet Trail)
Dist: 8 miles
- 15: Calumet Trail (Porter County Parks)**
Start: Mineral Springs Road
End: US 12/LaPorte County Line
Dist: 9 miles

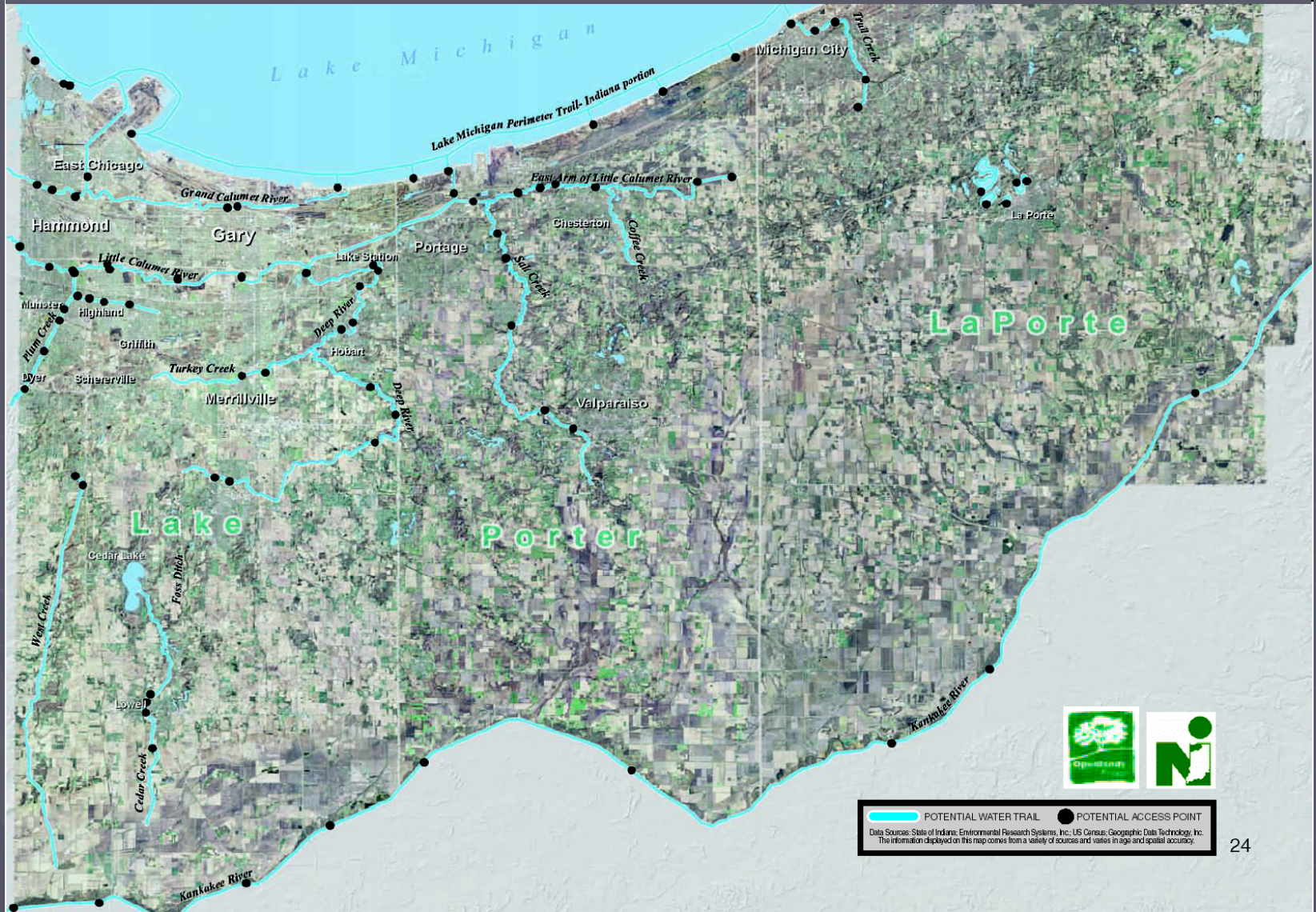
- 16: Singing Sands Trail, Phs. 1 (Michigan City)**
Start: US 12/County Line
End: Washington Trail, Michigan City
Dist: 3 miles
Status: Funded 2004
- 17: Singing Sands Trail, Phs. 2 (Michigan City)**
Start: Washington Park
End: Liberty Trail Road
Dist: 1.5 miles
- 18: Singing Sands Trail, Phs. 3 (Michigan City)**
Start: Liberty Trail Road
End: Meer Road (corporate limits)
Dist: 4 miles
- 19: US 12 Trail (LaPorte County Parks)**
Start: Meer Road
End: Michigan State Line
Dist: 1 mile
- 20: Great Lakes Trail (State of Michigan)**
Start: Michigan State Line
End: Downtown New Buffalo
Dist: 3 miles



Greenway Opportunities for Northwest Indiana



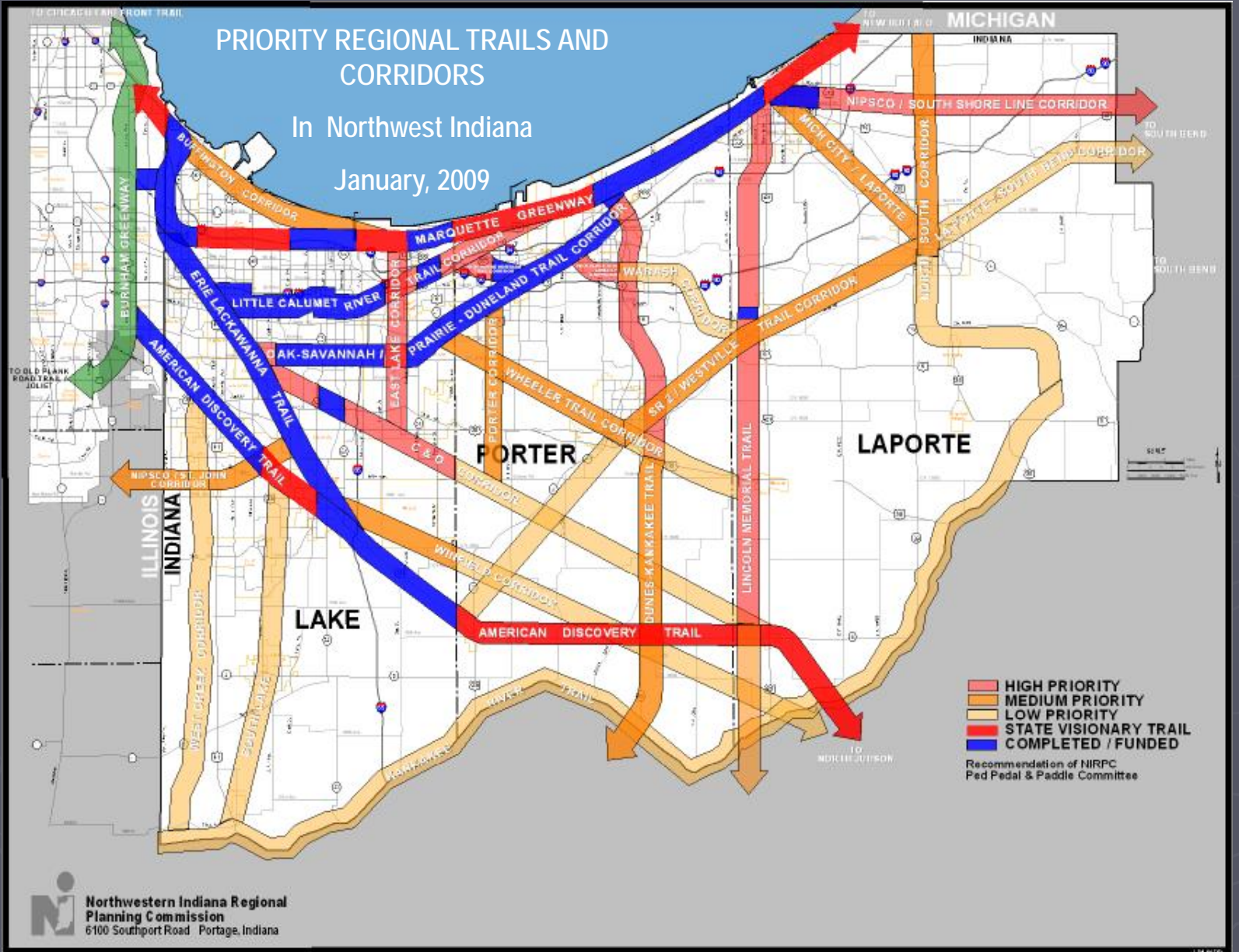
POTENTIAL WATER TRAILS



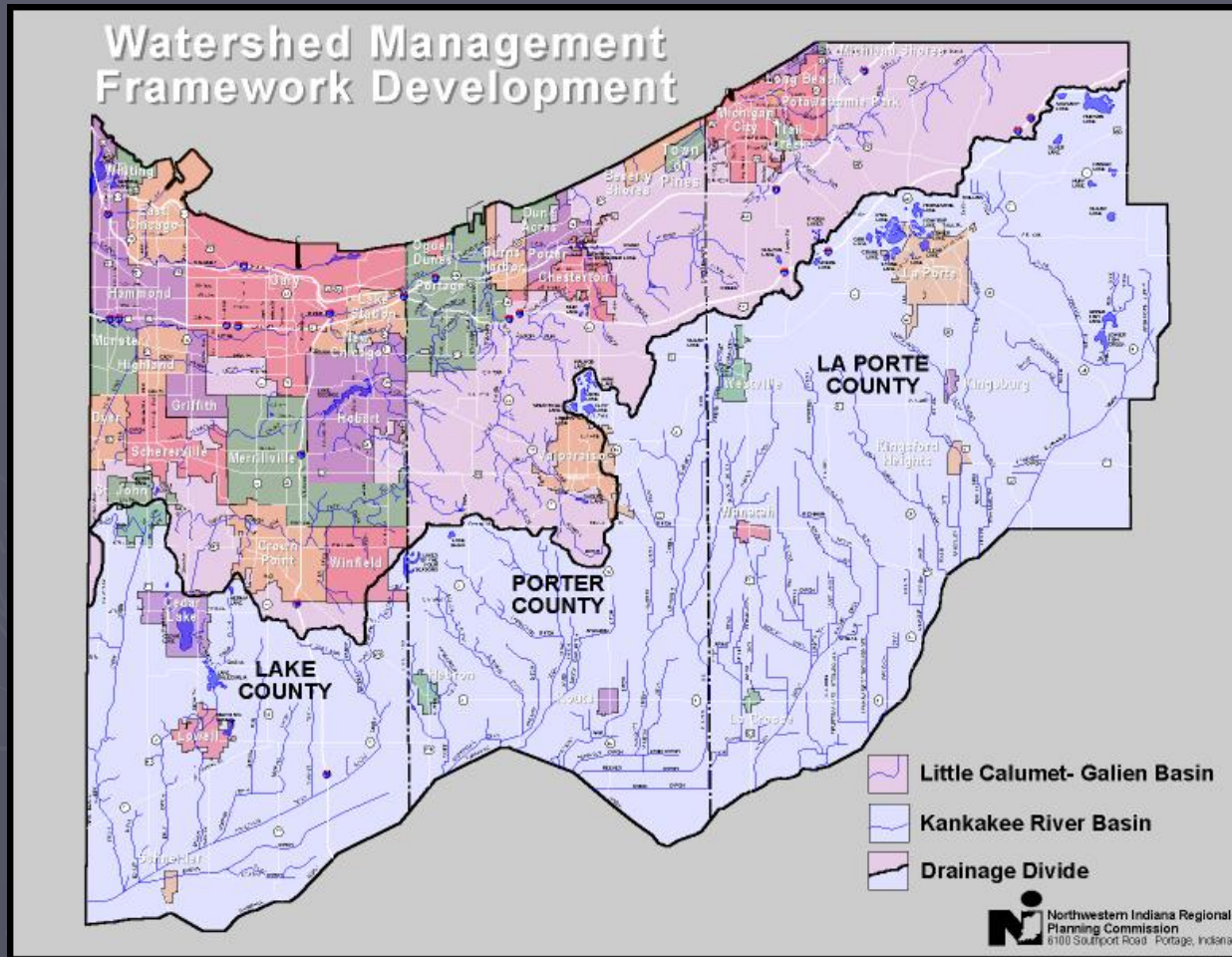
PRIORITY REGIONAL TRAILS AND CORRIDORS

In Northwest Indiana

January, 2009



Watershed Management Framework for Lake, Porter, & LaPorte Counties



Mission Statement

To establish a watershed planning and management framework for the enhancement, restoration and protection of water quality in Lake, Porter, and LaPorte counties through the facilitation of communication, education, and coordination among watershed stakeholders.

Interregional Cooperation

Wingspread Accord – 2009

- Government Leadership Forum
- Federal & State Partners
- Increase Communication
- Improve Planning Coordination





***Thank
You***

www.nirpc.org

nirpc@nirpc.org

6100 Southport Road Portage, Indiana 46368 (219) 763-6060

Calumet Summit 2010