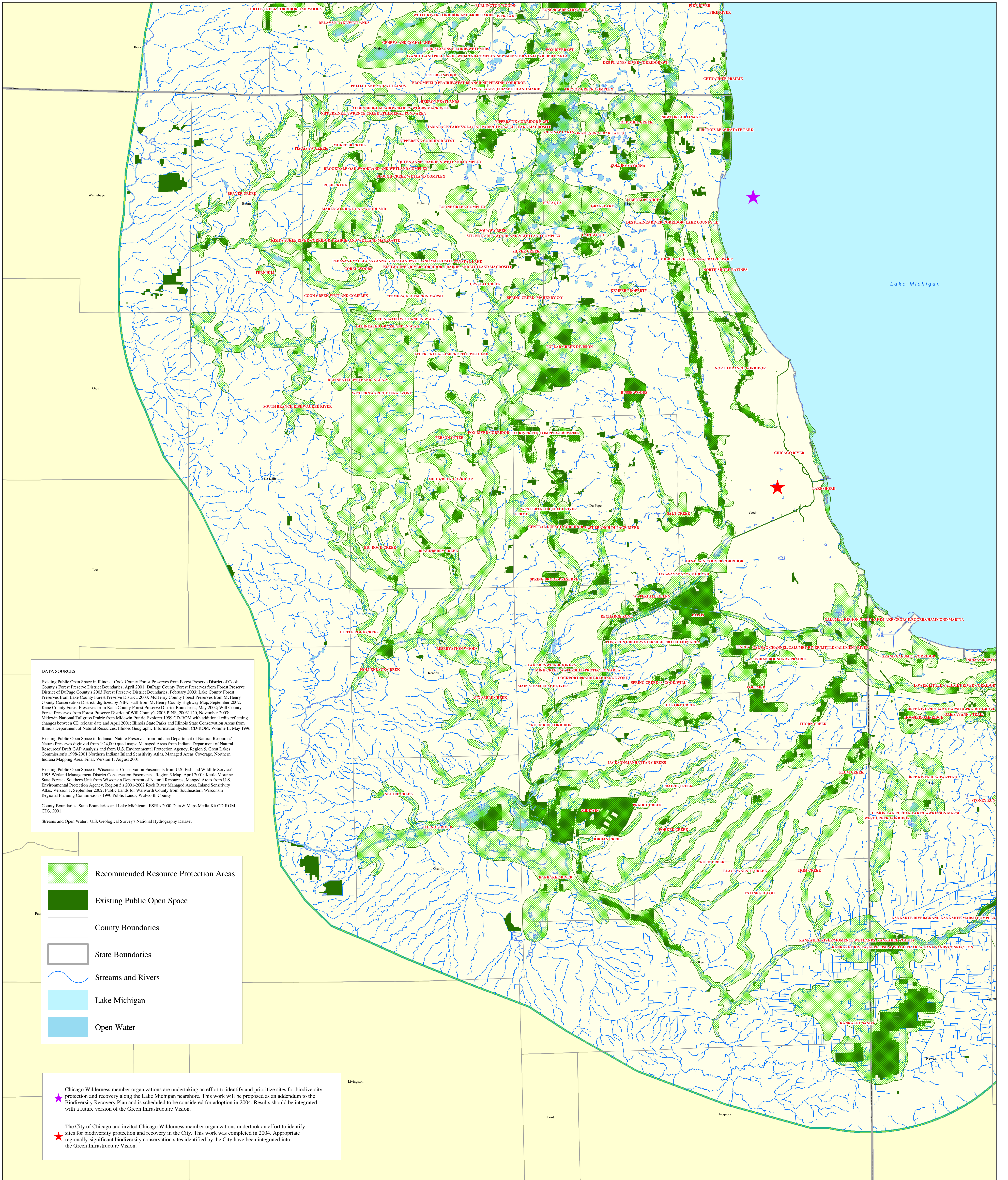
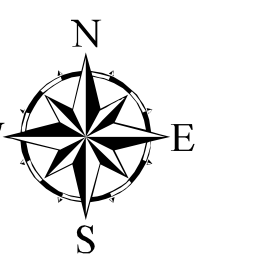


Chicago Wilderness Green Infrastructure Vision Northeastern Illinois



DATA SOURCES:

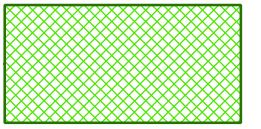




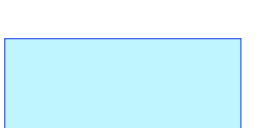

Existing Public Open Space in Illinois: Cook County Forest Preserves from Forest Preserve District of Cook County's Forest Preserve District Boundaries, April 2001; DuPage County Forest Preserves from Forest Preserve District of DuPage County's 2003 Forest Preserve District Boundaries, February 2003; Lake County Forest Preserves from Lake County Forest Preserve District Boundaries, 2005; McHenry County Forest Preserves from McHenry County Conservation District, digitized by NIPCC staff from McHenry County Highway Map, September 2002; Kane County Forest Preserves from Kane County Forest Preserve District Boundaries, May 2002; Will County Forest Preserves from Forest Preserve District of Will County's 2001 FINS, 2003/1/20, November 2005; Midwestern National Tallgrass Prairies from Midwestern Prairie Explorer 1999 CD-ROM with additional edits reflecting changes between CD release date and April 2001; Illinois State Parks and Illinois State Conservation Areas from Illinois Department of Natural Resources, Illinois Geographic Information System CD-ROM, Volume II, May 1996

Existing Public Open Space in Indiana: Nature Preserves from Indiana Department of Natural Resources' Nature Preserves digitized from 1:24,000 quad maps; Managed Areas from Indiana Department of Natural Resources' Draft GAP Analysis and from U.S. Environmental Protection Agency, Region 5, Great Lakes Commission's 1998-2001 Northern Indiana Inland Sensitivity Atlas, Managed Areas Coverage, Northern Indiana Mapping Area, Final, Version 1, August 2001

Existing Public Open Space in Wisconsin: Conservation Easements from U.S. Fish and Wildlife Service's 1995 Wetland Management District Conservation Easements - Region 3 Map, April 2001; Kettle Moraine State Forest - Southern Unit from Wisconsin Department of Natural Resources; Managed Areas from U.S. Environmental Protection Agency, Region 5, 2001, 2002 Rock River Managed Areas, Inland Sensitivity Atlas, Version 1, September 2002; Public Lands for Walworth County from Southeastern Wisconsin Regional Planning Commission's 1990 Public Lands, Walworth County

County Boundaries, State Boundaries and Lake Michigan: ESRI's 2000 Data & Maps Media Kit CD-ROM, CD3, 2001

Streams and Open Water: U.S. Geological Survey's National Hydrography Dataset

-  Recommended Resource Protection Areas
-  Existing Public Open Space
-  County Boundaries
-  State Boundaries
-  Streams and Rivers
-  Lake Michigan
-  Open Water

Chicago Wilderness member organizations are undertaking an effort to identify and prioritize sites for biodiversity protection and recovery along the Lake Michigan nearshore. This work will be proposed as an addendum to the Biodiversity Recovery Plan and is scheduled to be considered for adoption in 2004. Results should be integrated with a future version of the Green Infrastructure Vision.

The City of Chicago and invited Chicago Wilderness member organizations undertook an effort to identify sites for biodiversity protection and recovery in the City. This work was completed in 2004. Appropriate regionally-significant biodiversity conservation sites identified by the City have been integrated into the Green Infrastructure Vision.

