

An aerial photograph of a city, likely Chicago, showing a dense grid of streets and buildings. A large body of water, possibly Lake Michigan, is visible in the upper right portion of the image. The text is overlaid on the top left of the image.

Calumet Summit 2010: A Call to Connect

Setting the Context

Mark Bouman
Professor of Geography
Chicago State University

I have an existential map.

It has "you are here" written all over it.

Stephen Wright

You are here...



And here...



And here...



(TOP) BLAST FURNACE; (MIDDLE) CONVERTER OVER THE CALUMET RIVER; (BOTTOM) QUENCH TOWER

And here...

KEEP AWAY FROM VESSELS WHEN FIRST HEAT IS BLOWING ON A NEW BOTTOM.
ALSO WHEN BELL RINGS AS VESSEL IS BEING SCRAPPED.

DRZ STE SA DALEKO OD VESELA . KEDJ PRVA HITZA SA BLOVUJE NA NOVEM
SPOOKU . I KEDJ ZVONI . LEBO VTEM CASE SZA SCRAP HADZE DO VESELA .

TARTSATOK MAGATOKAT TAVOL OLYAN MEDENCZETOL (VESSEL), MELY AZ
ELSŐ HOSEGET FUJJA UJ FENEKEN , ES HA CSENGETNEK . MERT AKKOR A
SCREPPET DOBJAK BE A VESZLIBA .

DRŽI SE DALEKO OD VESELA KAD PRVI ŽAR ZAPIRI NA NOVO TLO. TAKODJER
PAZI KAD ZVONO ZAZVONI. JER JE TO ZNAK DA SE VESEL SKRAPUJE.

JE ZDALA OD ZBIORNIKA KIEDY PIERWSZE GORĄCO IDZIE NA
CHAJ NA DZWONKI. BO ZBIORNIKI BEDA "SKEPOWANIE"
W A FIELD GENERAL SUPERIN



And here...



Photo: H.R. Koopman, in the collection of the Pullman State Historic Site, #11172

And here...

When you are here.



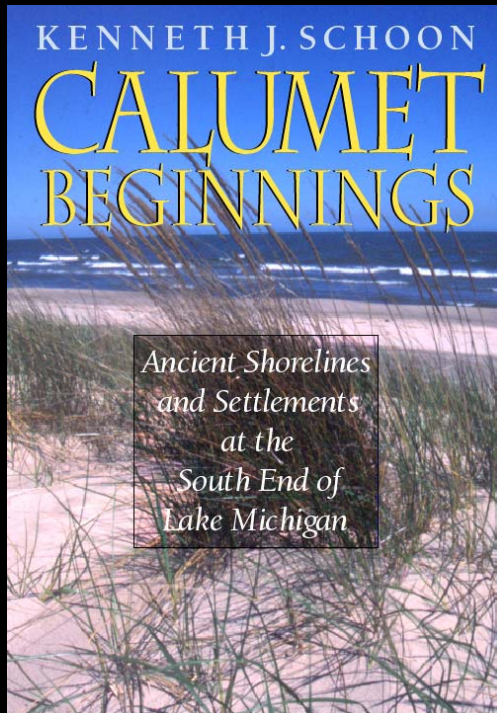
My goals:

To introduce this map.

To introduce this region.

To introduce this Summit.

Precedent for this border



Ken Schoon, 2003

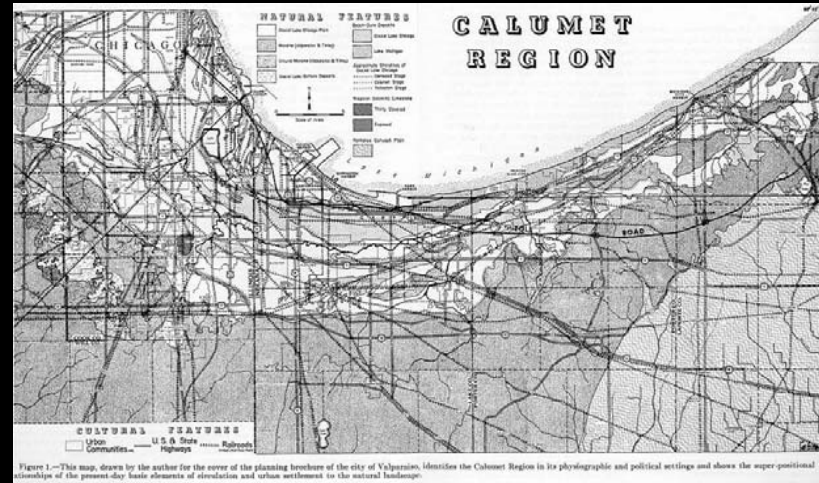


Figure 1—This map, drawn by the author for the cover of the planning brochure of the city of Valparaiso, identifies the Calumet Region in its physiographic and political settings and shows the super-positional relationship of the present-day basic elements of circulation and urban settlement to the natural landscape.

Alfred Meyer, 1930s – 1950s

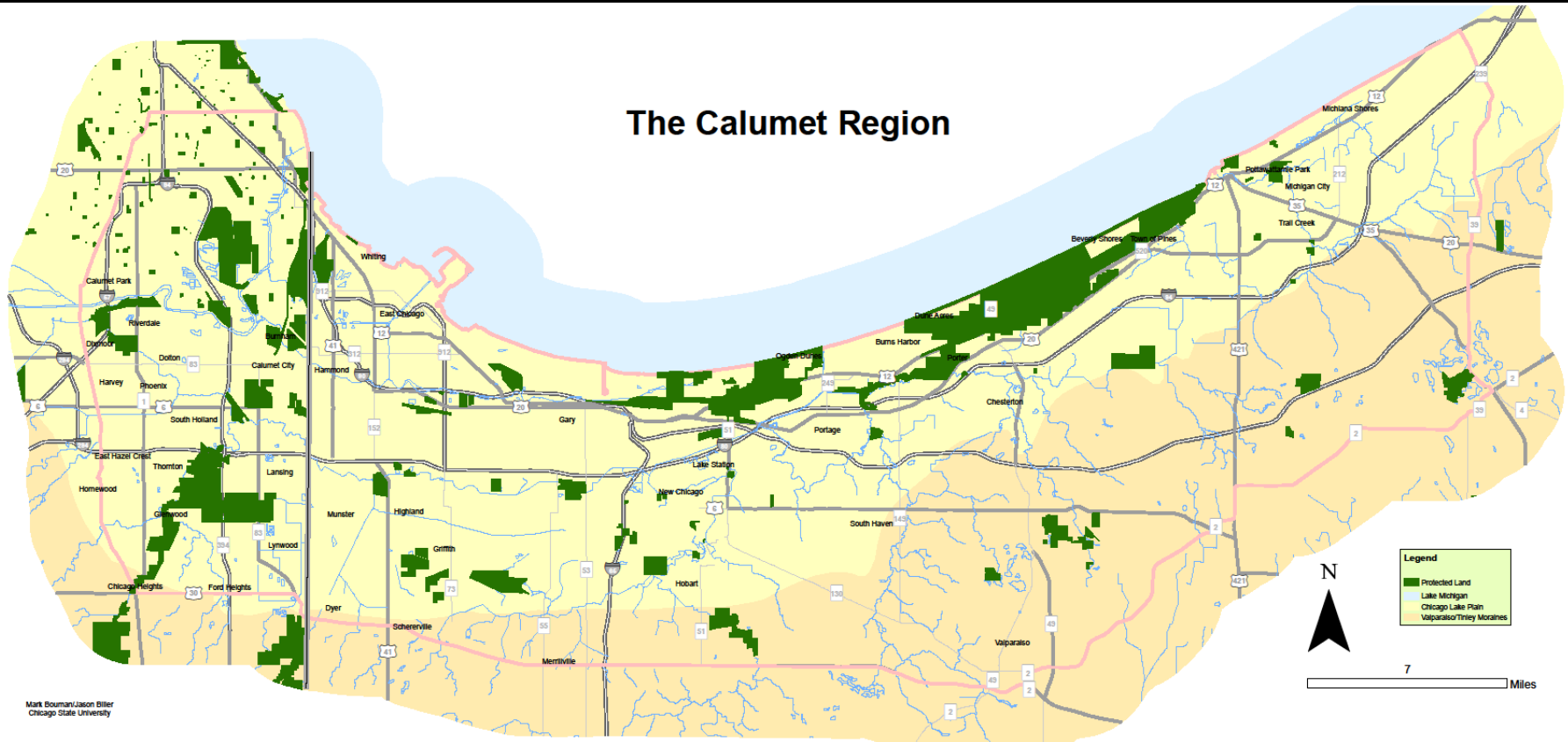


Corridor boundary lines shown as a general visual reference only.

NPS, 1998

- Includes most of the Valparaiso Moraine and Chicago Lake Plain
- Includes most of the historic Calumet river watershed
- Incorporates the heavy industrial region
- Sets as a boundary the historic routes that side-stepped the region to get *through* it (Sauk Trail and Vincennes Trace)
- In short, a coherent compromise.

What do the borders include?



- More than 1.77 million people (more than metro Indianapolis)
- 68 municipalities, 5 counties, 2 states
- 42,000 managed acres ~ size of Acadia NP

Connecting the dots

Alfred Meyer: “...if we want to depict and interpret the environmental ensemble of a region correctly, we must keep our eyes fixed *on the way things actually occur together.*”

How Meyer did it: stages in profile

Generalized Ecological Silhouette Studies in Sequent Occupance Geography
CALUMET REGION, NORTHWEST INDIANA-NORTHEAST ILLINOIS
 Alfred H. Meyer, Valparaiso University

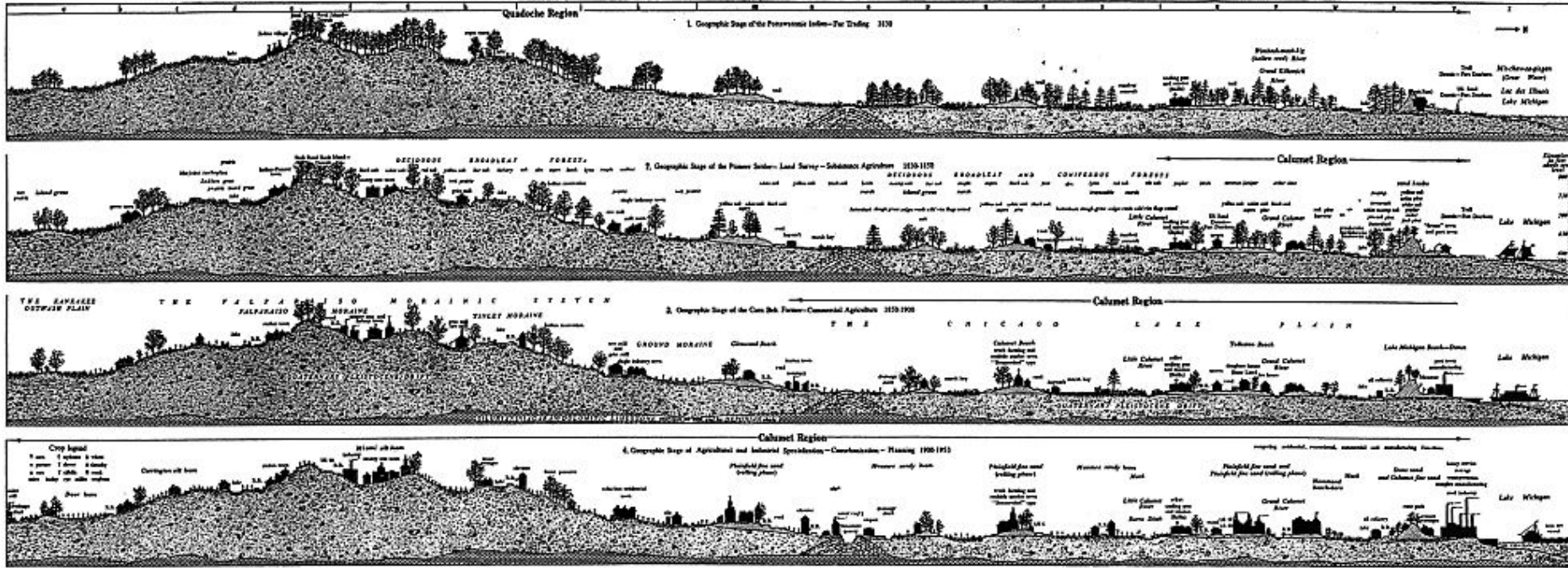
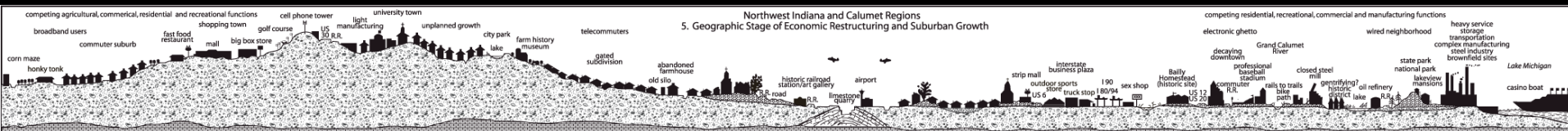


Figure 2.—These skyline sketches are idealized in portrayal in our perspective the evolving stage and story of the Calumet-South Chicago landscape.



1830

BEFORE THE WESTWARD EXPANSION

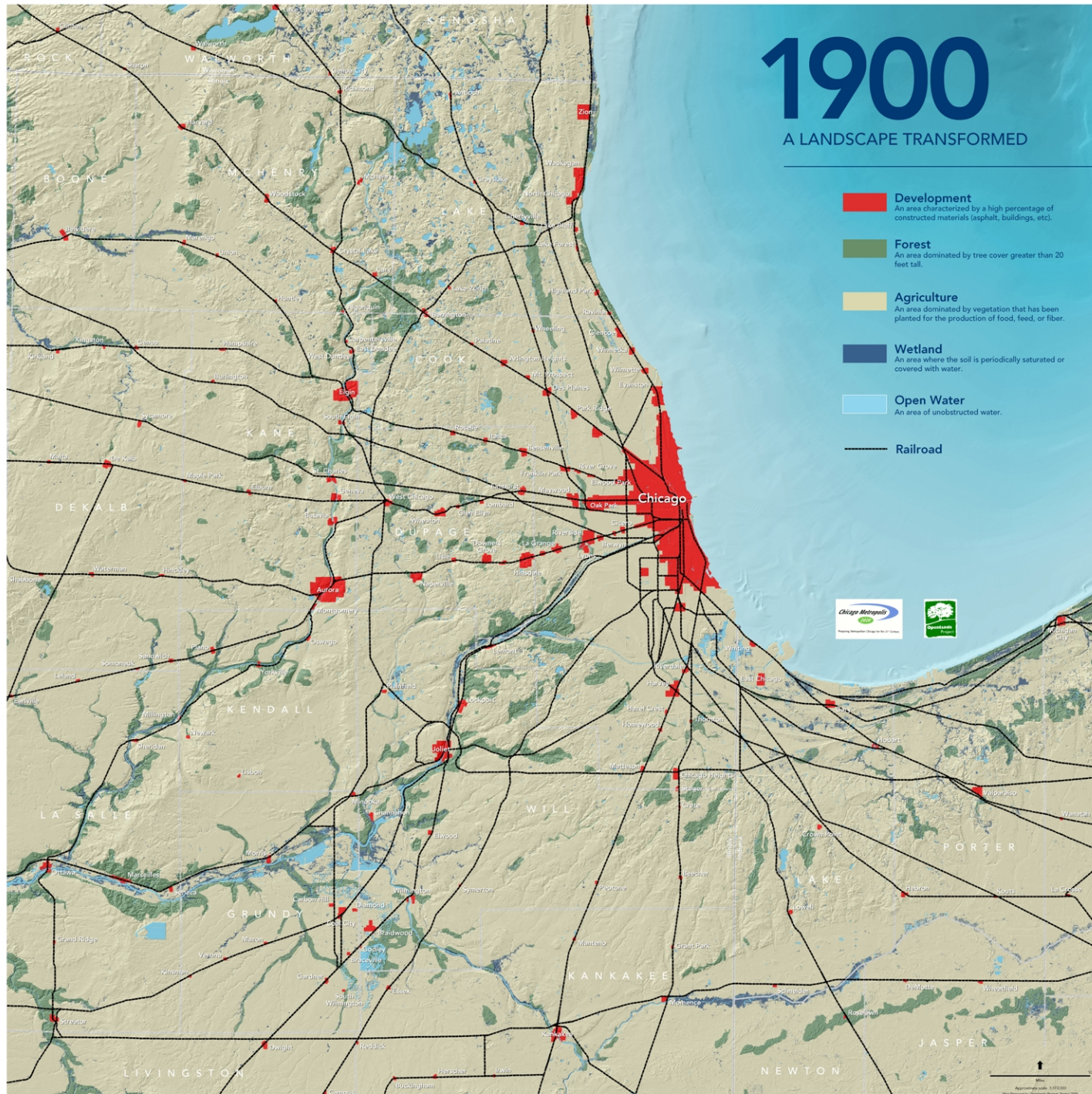


- Forest**
A thick growth of trees covering a large tract of land.
- Prairie**
An extensive area of flat or rolling grassland, predominantly treeless.
- Wet Prairie**
An extensive area of flat or rolling grassland, predominantly treeless, occurring on wet ground.
- Wetland**
An area where the soil is periodically saturated or covered with water.
- Open Water**
An area of unobstructed water.
- Pioneer Settlement**
- Native American Settlement**



1900

A LANDSCAPE TRANSFORMED



- Development**
An area characterized by a high percentage of constructed materials (asphalt, buildings, etc.)
- Forest**
An area dominated by tree cover greater than 20 feet tall.
- Agriculture**
An area dominated by vegetation that has been planted for the production of food, feed, or fiber.
- Wetland**
An area where the soil is periodically saturated or covered with water.
- Open Water**
An area of unobstructed water.
- Railroad**

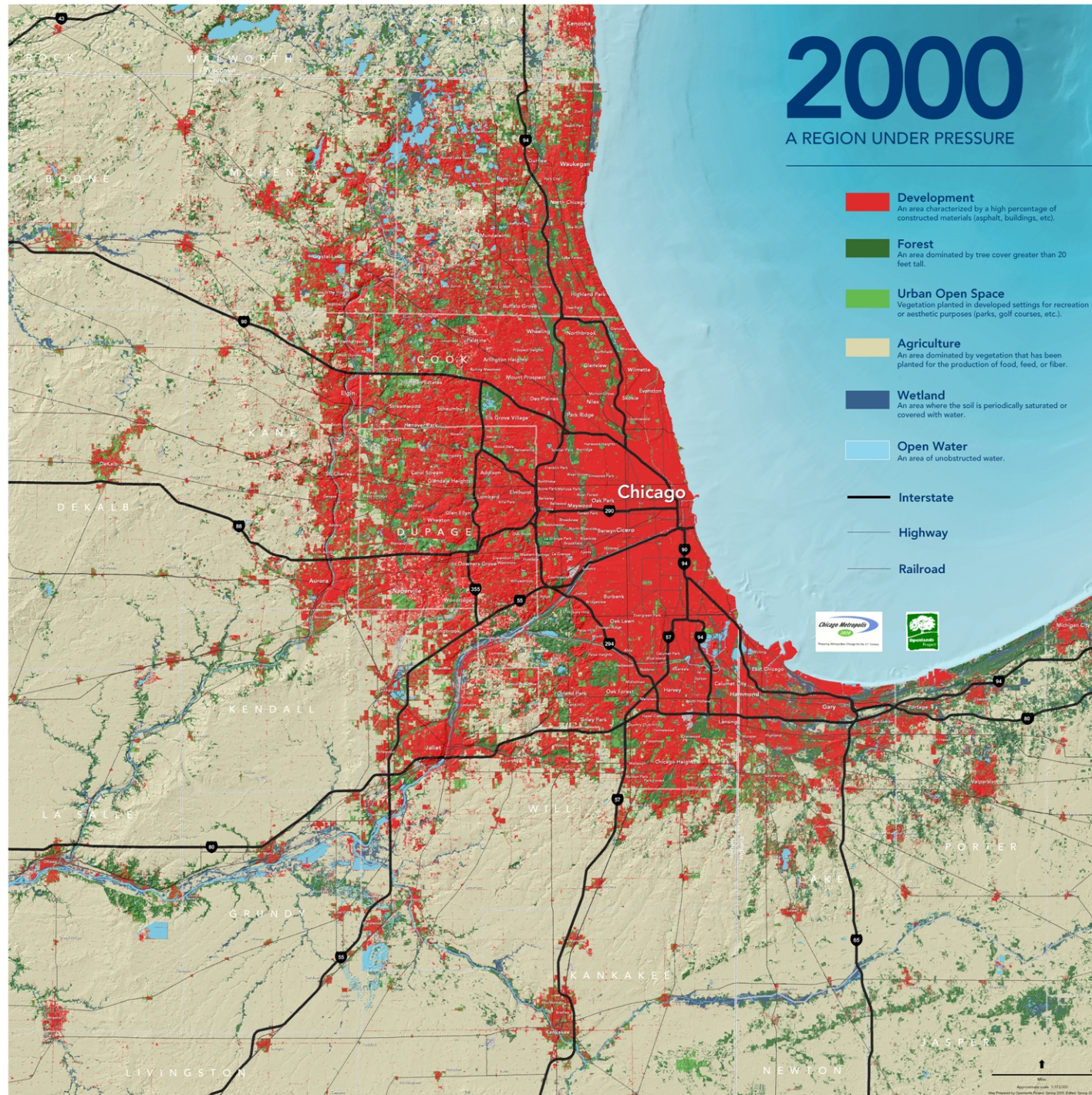


0 1 2 Miles
Approximate scale, 1:112,000
Map prepared by Geographic Information Systems

2000

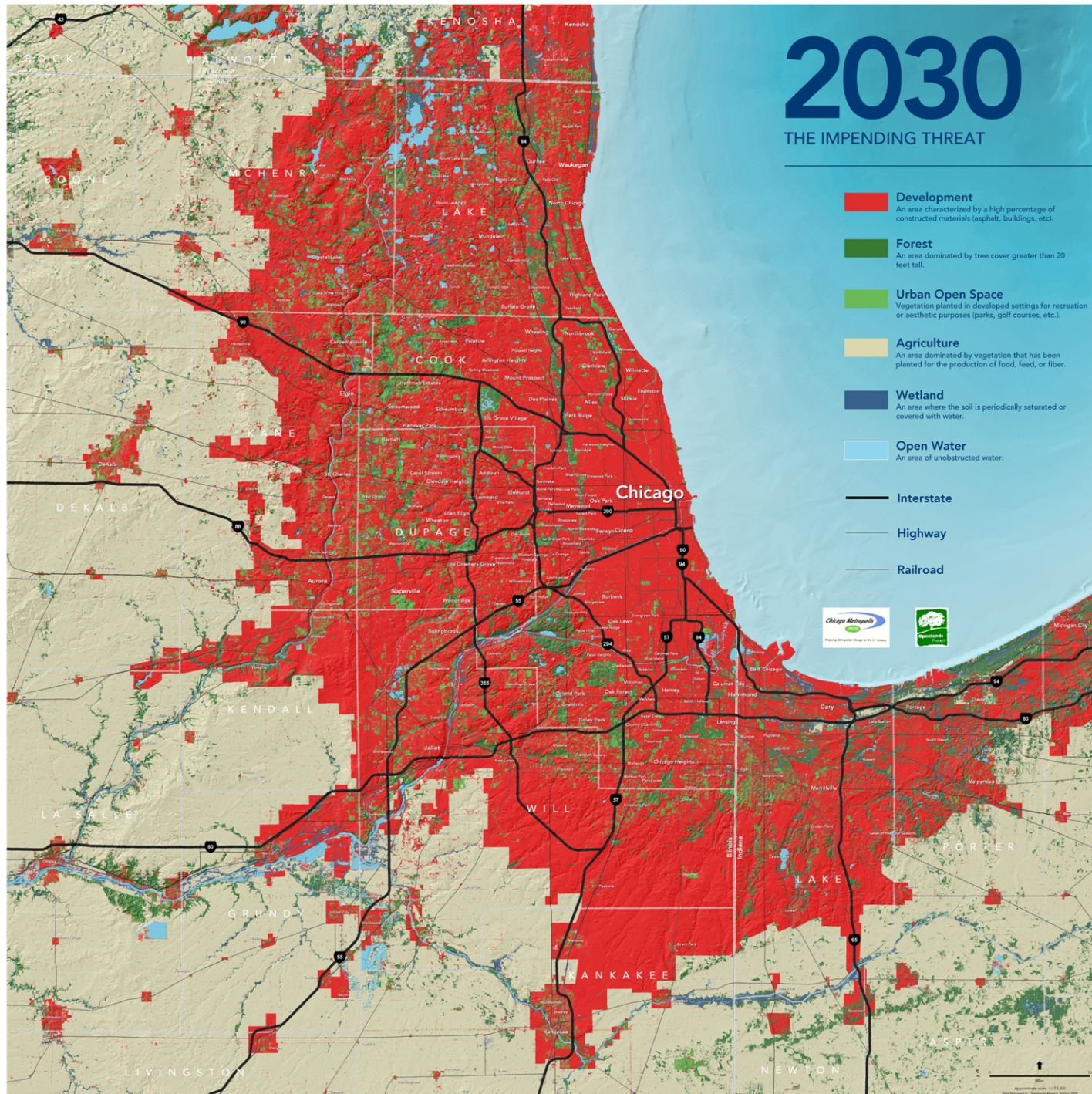
A REGION UNDER PRESSURE

-  **Development**
An area characterized by a high percentage of constructed materials (asphalt, buildings, etc.)
-  **Forest**
An area dominated by tree cover greater than 20 feet tall.
-  **Urban Open Space**
Vegetation planted in developed settings for recreation or aesthetic purposes (parks, golf courses, etc.).
-  **Agriculture**
An area dominated by vegetation that has been planted for the production of food, feed, or fiber.
-  **Wetland**
An area where the soil is periodically saturated or covered with water.
-  **Open Water**
An area of unobstructed water.
-  **Interstate**
-  **Highway**
-  **Railroad**



2030

THE IMPENDING THREAT

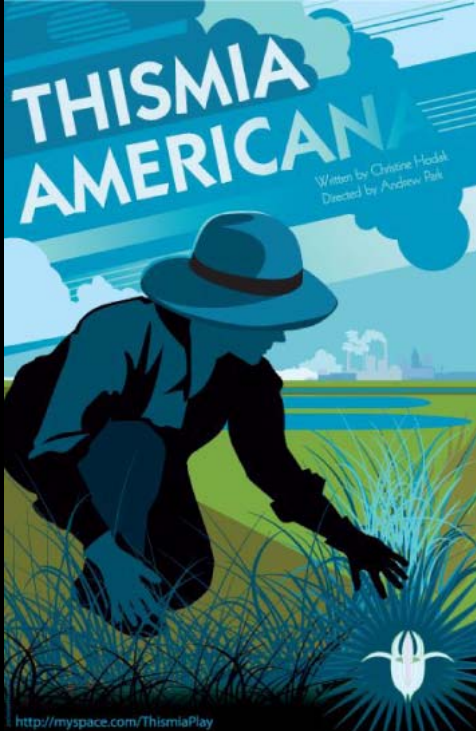


- Development**
An area characterized by a high percentage of constructed materials (asphalt, buildings, etc).
- Forest**
An area dominated by tree cover greater than 20 feet tall.
- Urban Open Space**
Vegetation planted in developed settings for recreation or aesthetic purposes (parks, golf courses, etc).
- Agriculture**
An area dominated by vegetation that has been planted for the production of food, feed, or fiber.
- Wetland**
An area where the soil is periodically saturated or covered with water.
- Open Water**
An area of unconstructed water.
- Interstate**
- Highway**
- Railroad**



Scale bar and north arrow
Approximate scale: 1:125,000
Map prepared by Openlands, August 2009

Another stage, another way to connect



THISMIA AMERICANA
Written by Christine Hodak
Directed by Andrew Park

<http://myspace.com/ThismiaPlay>

Thismia americana, The Play

A young Chicago woman's search for purpose leads her to 119th and Torrence, the first and last sighting place of the mysterious *Thismia americana*.

Thismia americana is a multi-disciplinary exploration of identity, trust and loss told through traditional narrative, video, puppetry and dance.

Sponsoring organizations:

- Calumet Heritage Partnership
- City of Chicago Dept. of Environment
- Community Arts Assistance Program
- The Field Museum
- Pullman State Historic Site

For more info on *Thismia* events, please visit <http://myspace.com/ThismiaPlay>

Artwork by Joseph Taylor: joetaylorart.com

Only three performances
Free. No reservations. Come early.

September 24 – 27, 2009
Thu 7:30p | Sat Sun 2p

Historic Pullman Clock Tower
Administration Building
11057 S. Cottage Grove Ave.
Chicago Parking available.

Brush up your Shakespeare....

A set of Calumet stages

- A wetland area
- Biodiverse
- A re-engineered landscape
- Heavily industrial
- Communities and work
- Deindustrialization
- Brownfields
- Waste disposal and the question of justice
- Large-scale redevelopment
- Grass-roots revitalization

I mean it, brush up your Shakespeare...

“What’s in a name?”

[Romeo and Juliet]

My lord, the enemy is past the **marsh** *[Richard III]*

Like to a lonely dragon that his **fen** makes feared and talked of more than seen
[Coriolanus]

Caliban: As wicked dew as e'er my mother brushed with raven's feather from
unwholesome **fen** Drop on you both! A south-west blow on ye And blister
you all o'er! *[The Tempest]*

Or, as t'were perfumed by a **fen**. *[The Tempest]*

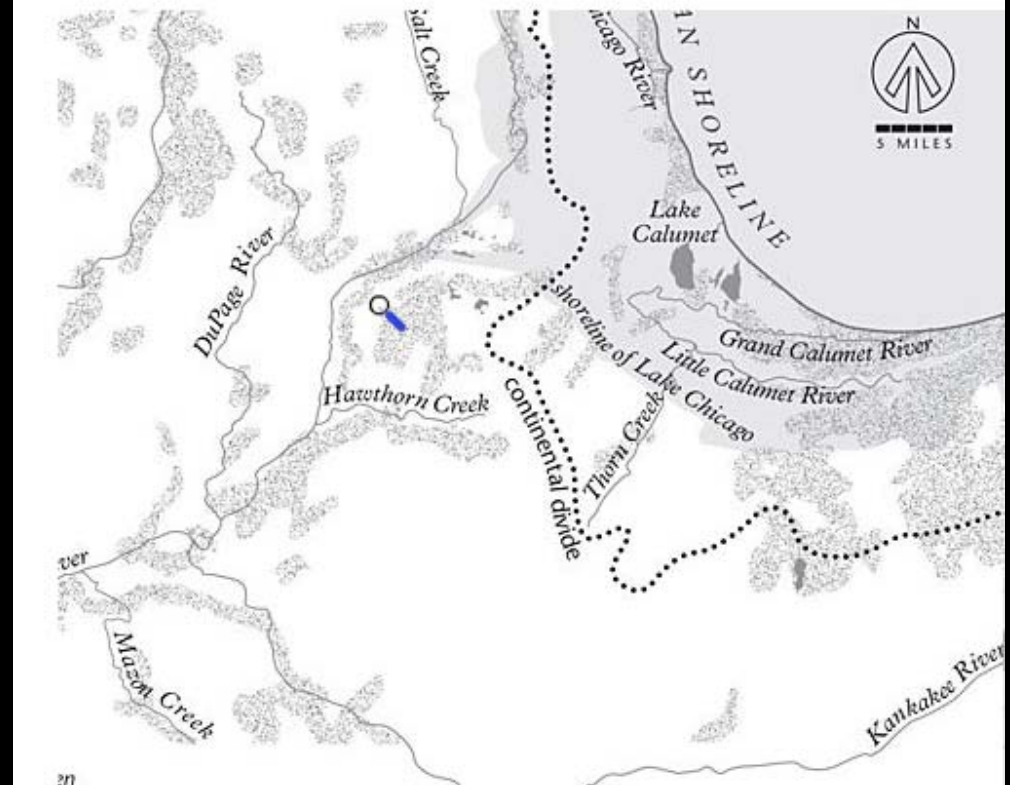
Puck: I'll follow you, I'll lead you about a round, Through **bog**, through bush,
thorough brake, thorough briar,... *[A Midsummer Night's Dream]*

Edgar: Who gives anything to Poor Tom? whom the foul fiend hath led through
fire and through flame, through ford and whirlpool, o'er **bog** and quagmire,
that hath laid knives under his pillow and halters in his pew, set ratsbane by
his porridge, made him proud of heart, to ride on a bay trotting horse over
four-inched bridges to course his own shadow for a traitor. *[King Lear]*

Hydrologic connection:

"[The] Calumet rivers and their tributaries quite well express the 'natural' basis of delimitation and unity of the region..."
(Meyer 1954: 250)

The Chicago Area Before Human Transformation



“One touch of nature makes the whole world kin”

[Troilus and Cressida]



© Joe Nowak

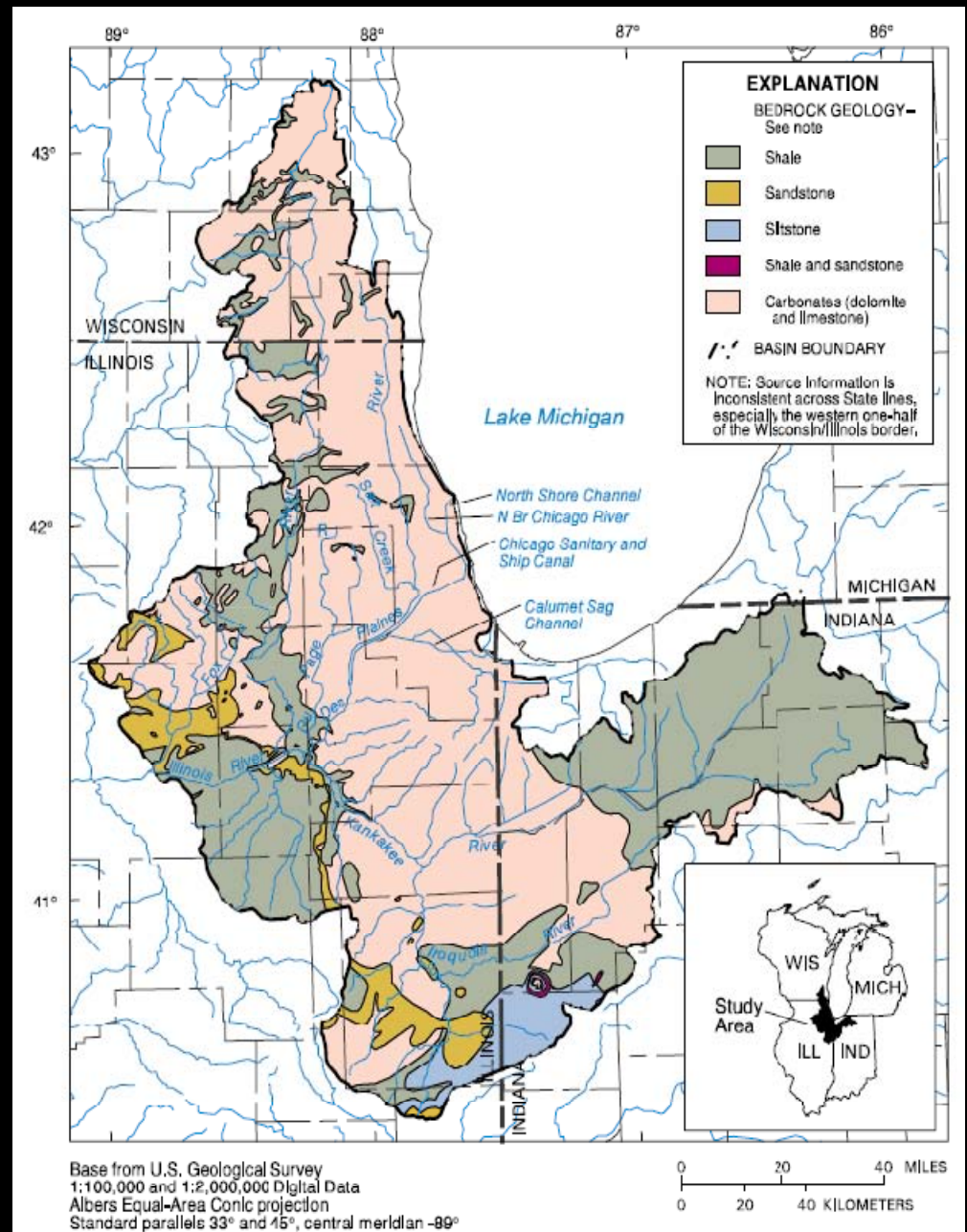


“O, what men dare do!”

[Much Ado About Nothing]



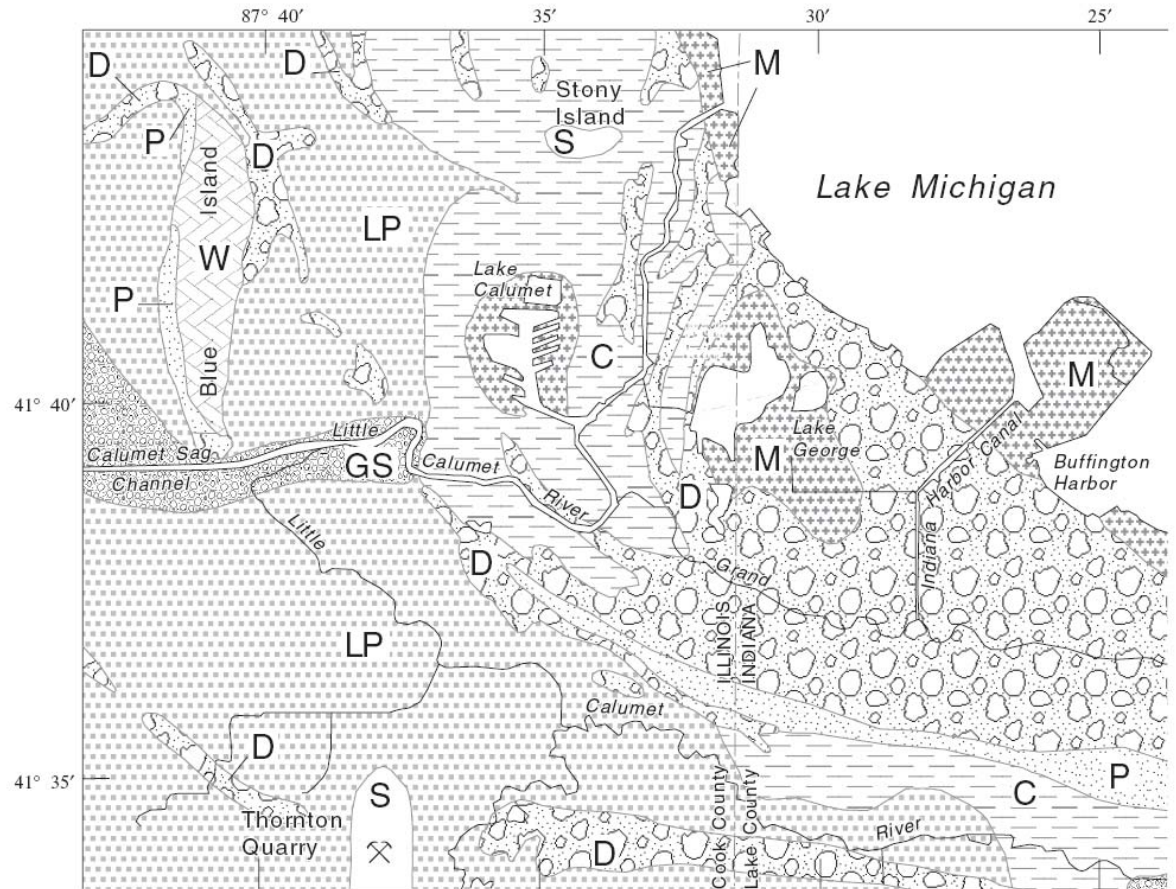
Engineering new connections



Source: Arnold, et al. *Environmental Setting of the Upper Illinois River Valley and Implications for Water Quality*, USGS Water Resources Investigations Report 98-4268, 1998

Figure 4. (A) Generalized uppermost bedrock geology in the upper Illinois River Basin (modified from Willman and others, 1975; Gray and others, 1987; and Wisconsin Geological and Natural History Survey, 1981).

Making new land



EXPLANATION

RECENT



M MADE AND MODIFIED LAND—Artificial fill and land substantially modified by the removal of unconsolidated deposits. Many small areas not mapped

WISCONSINAN AND RECENT



GS MUCK OR SILT OVER SAND AND GRAVEL—Outwash sand and gravel overlain in places by thin lacustrine, paludal or alluvial deposits of peat, muck, or clay. Martinsville Formation over outwash facies of Atherton Formation in Indiana, glacial sluiceway in Illinois



P SAND AND SOME SILT—Dune deposits. Dune facies of Atherton Formation in Indiana, Parkland Sand in Illinois



D SAND AND GRAVEL—Beach and shoreline deposits in bars, spits, and beaches. Some dune sand. Atherton Formation in Indiana, Dolton Member in Illinois



C CLAY AND SILT—Lacustrine deposits. Lacustrine facies of Atherton Formation in Indiana, Carmi Member in Illinois

WISCONSINAN



W TILL—End moraine deposit. Lagro Formation in Indiana, Wadsworth Till in Illinois



LP TILL—Wave-scoured lake-bottom till. Lagro Formation in Indiana, Wadsworth Till in Illinois

SILURIAN



S DOLOMITE—Marine deposit. Niagaran Series

Source: Kay, et al., "Characterization of Fill Deposits in the Calumet Region of Northeastern Illinois and Northwestern Indiana"

Figure 5. Surficial geology, Calumet region of northwestern Indiana and northeastern Illinois (modified from Schneider and Keller, 1970; thickness, type, and approximate date of initial fill deposition mapped through 1993 are shown in plates 1–3).

“It beggar’d all description”

[Antony and Cleopatra]



Sources: Coffman collection; Illinois Landmarks

Economic connections:

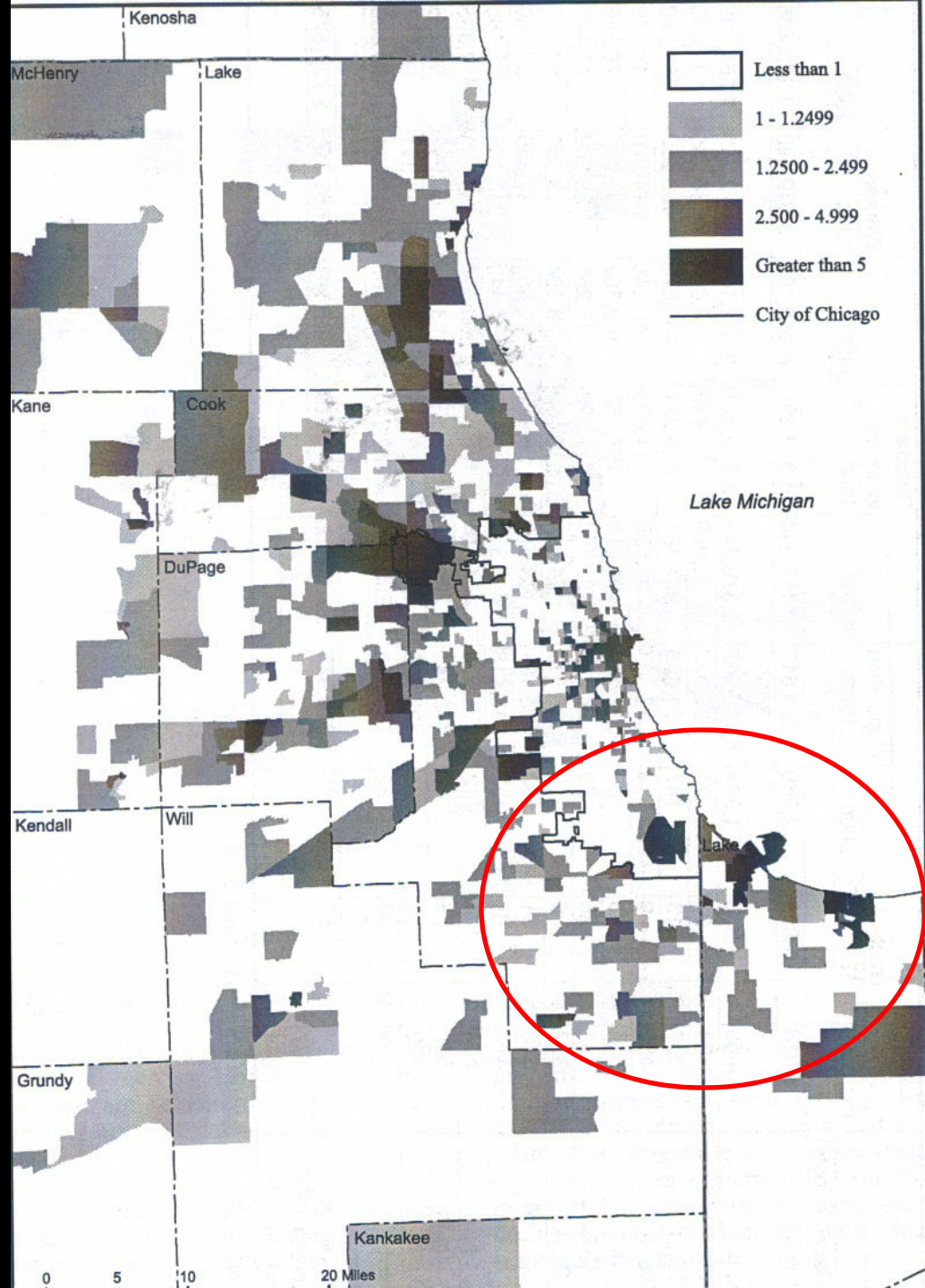
"to outsiders as well as residents of the area the Calumet stands out as a leading industrial region of the United States, and for that matter, of the world." (Meyer 1954: 250)



Source: LPCI

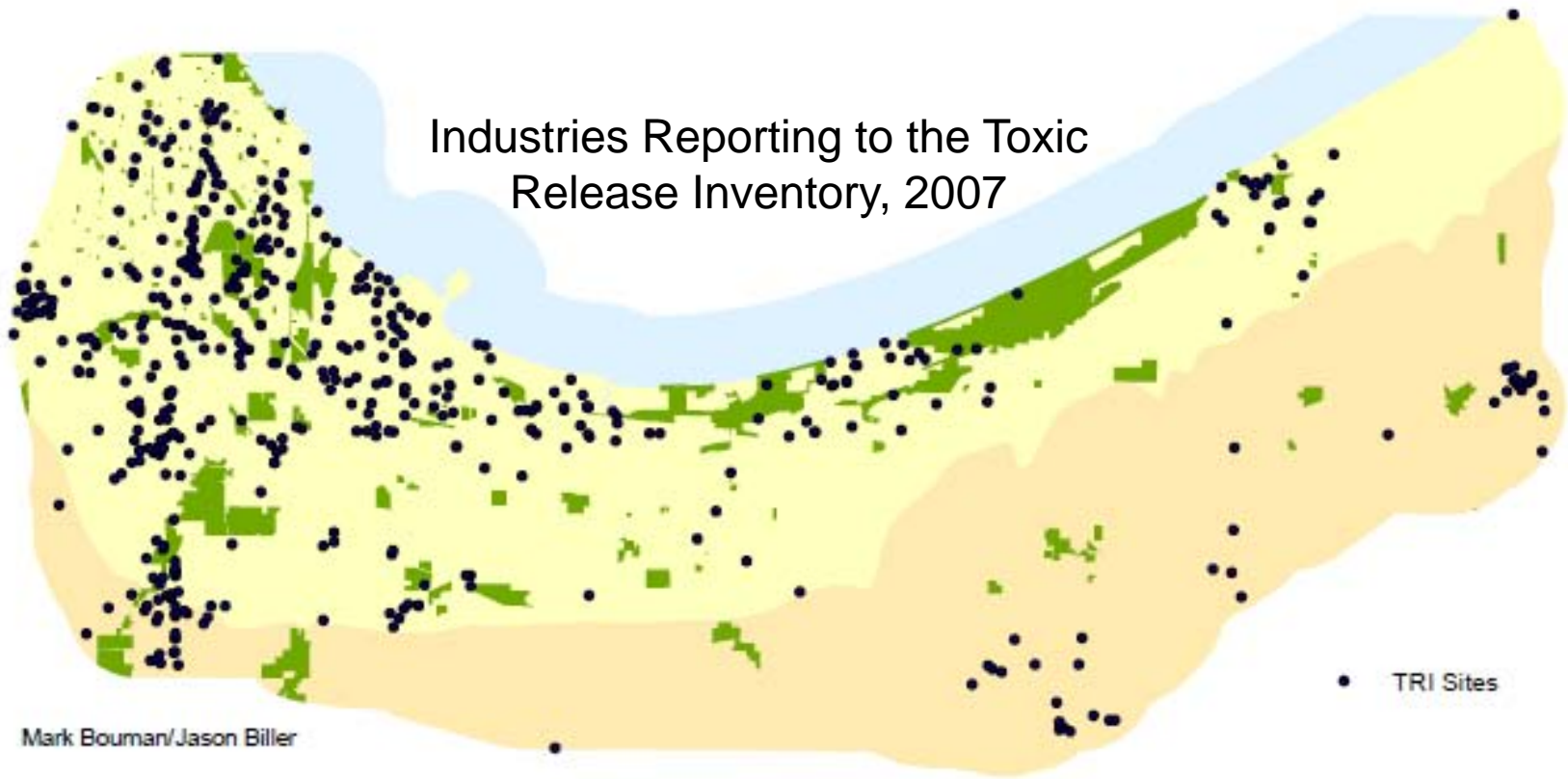
An Economic Region

Employment-Residence Ratio



Source: Richard P. Greene, "Strong Downtowns," in Greene, Bouman, and Grammenos, *Chicago's Geographies*

Industries Reporting to the Toxic Release Inventory, 2007



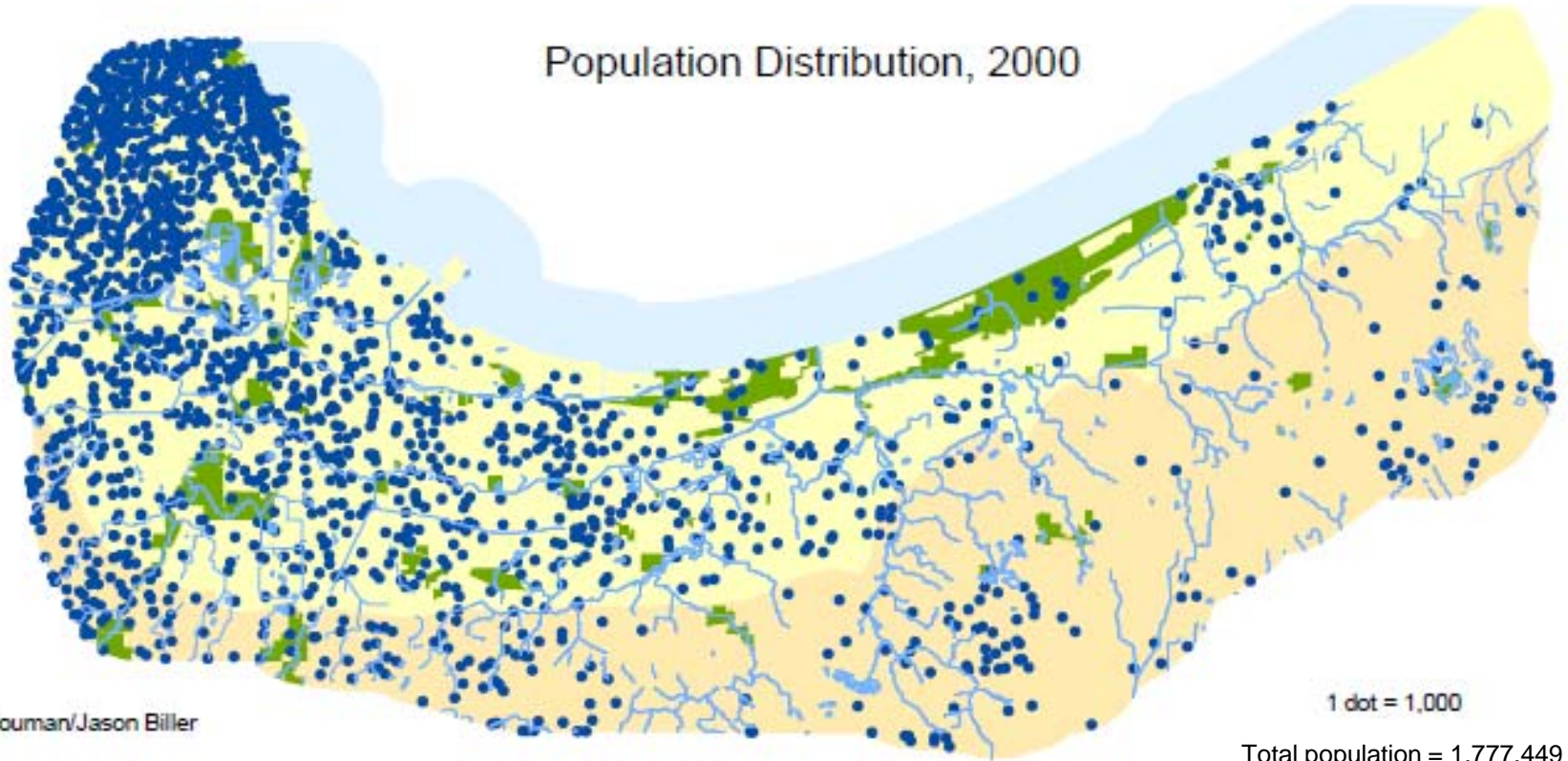
Mark Bouman/Jason Biller

“They have been at a great feast of languages”

[Love's Labor's Lost]



Population Distribution, 2000

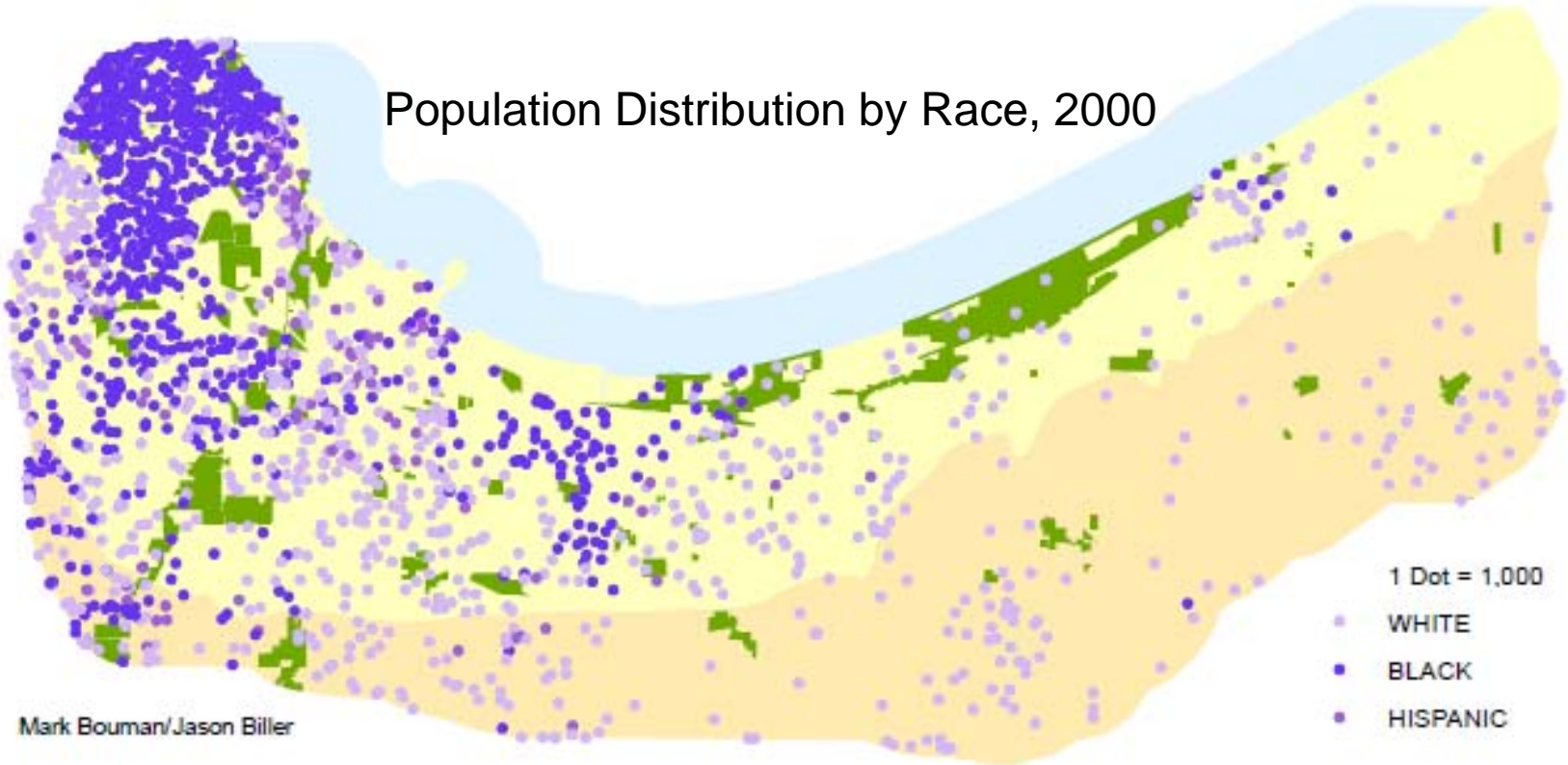


Mark Bouman/Jason Biller

1 dot = 1,000

Total population = 1,777,449

Population Distribution by Race, 2000



Mark Bouman/Jason Biller

White – 793,189 (44.6%)
Black = 869,426 (48.9%)
Hispanic = 155,015 (8.7%)

2000 census geography

- Illinois (12, 419,293); Indiana (6,080,485)
- Cook County (5,376, 741); Lake County (484,564); Porter County (146,798)
- Chicago (2,896,016); Gary (102,746); Hammond (83,048); East Chicago (32,414); Whiting (5,137)
- Indiana's Calumet: two (or three) counties, many municipalities, and 10% of the state's population.
- Illinois' Calumet: focus in the city of Chicago, which alone is almost 25% of the state's population.
- Chicago is 4 ½ times larger than Lake and Porter counties combined
- But Lake County has nearly twice as many people as the quarter million in the City of Chicago's Calumet region.

Attending to the “feast of languages”

Engaging Chicago’s Diverse Communities in the Chicago Climate Action Plan

COMMUNITY #1: SOUTH CHICAGO



Research Report

Submitted by:
Environment, Culture, and Conservation (ECCo)
The Field Museum

To:
The City of Chicago Department of Environment



Research Team:
Centro Comunitario Juan Diego
City of Chicago Department of Environment
Healthy Southeast Chicago
Science of Networks in Communities (SONIC) Research Lab,
Northwestern University

April 28, 2009

The Field
Museum

Engaging Chicago’s Diverse Communities in the Chicago Climate Action Plan

COMMUNITY #2: NORTH KENWOOD-OAKLAND / BRONZEVILLE



Submitted by:
Environment, Culture, and Conservation (ECCo)
The Field Museum

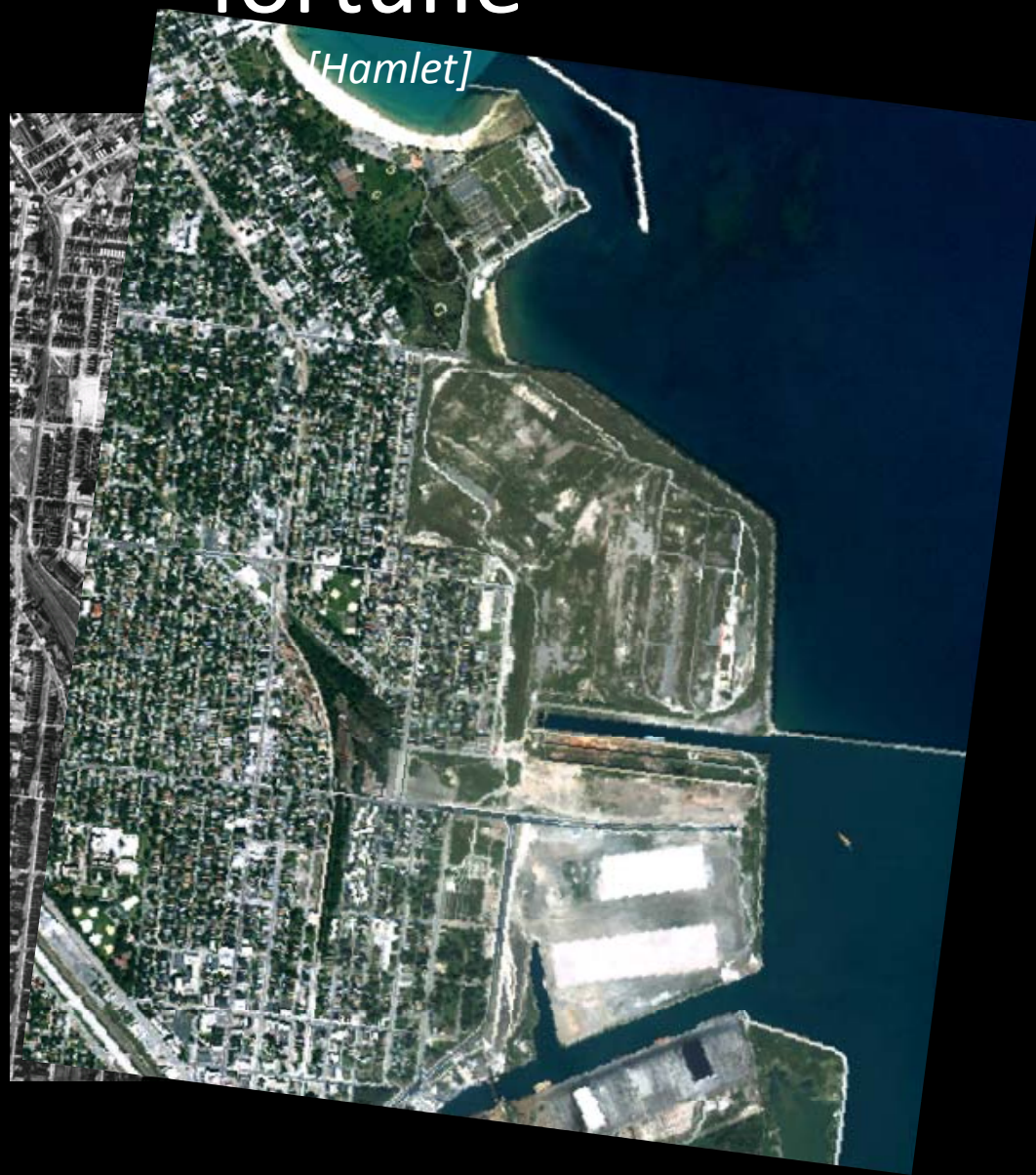
To:
The City of Chicago Department of Environment



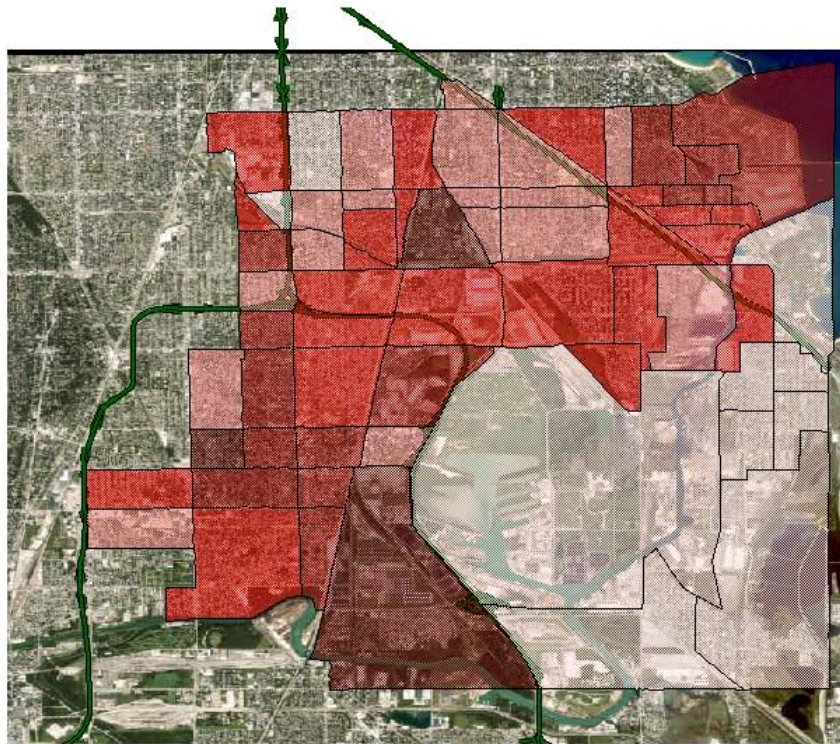
February 2010

The Field
Museum

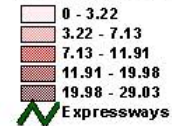
“The slings and arrows of outrageous
fortune”



% of Households Receiving Public Assistance



% of Households Receiving Public Assistance



3 0 3 6 Miles



Geography of Working Poverty: connected by circumstance

Working Poverty: working but family income falls below 200% of the poverty line

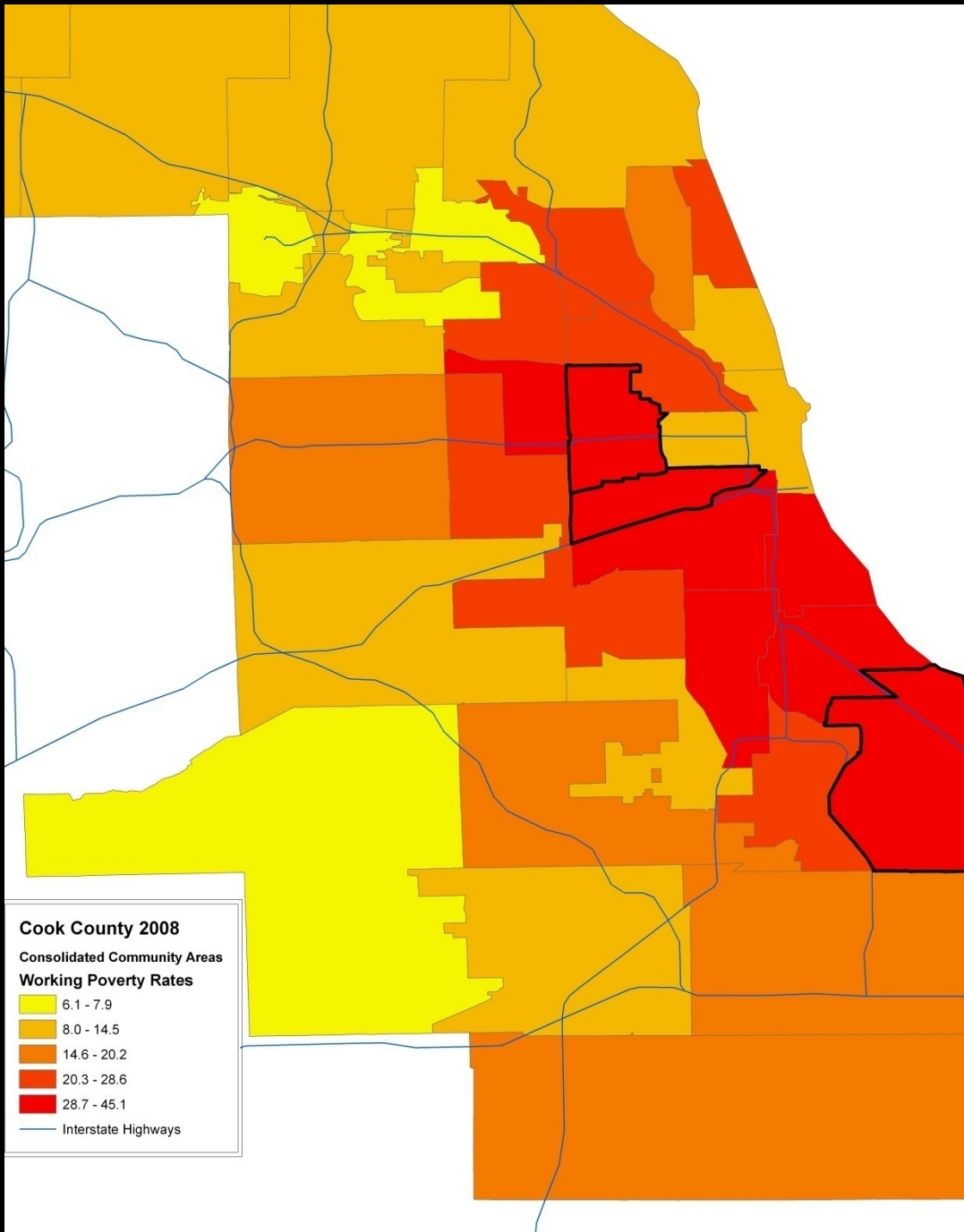
One in five workers living in poverty

70% of these are working full-time

45.2% South Lawndale, Lower West Side

39.2% Humboldt Park, West Garfield Park, East Garfield Park, North Lawndale

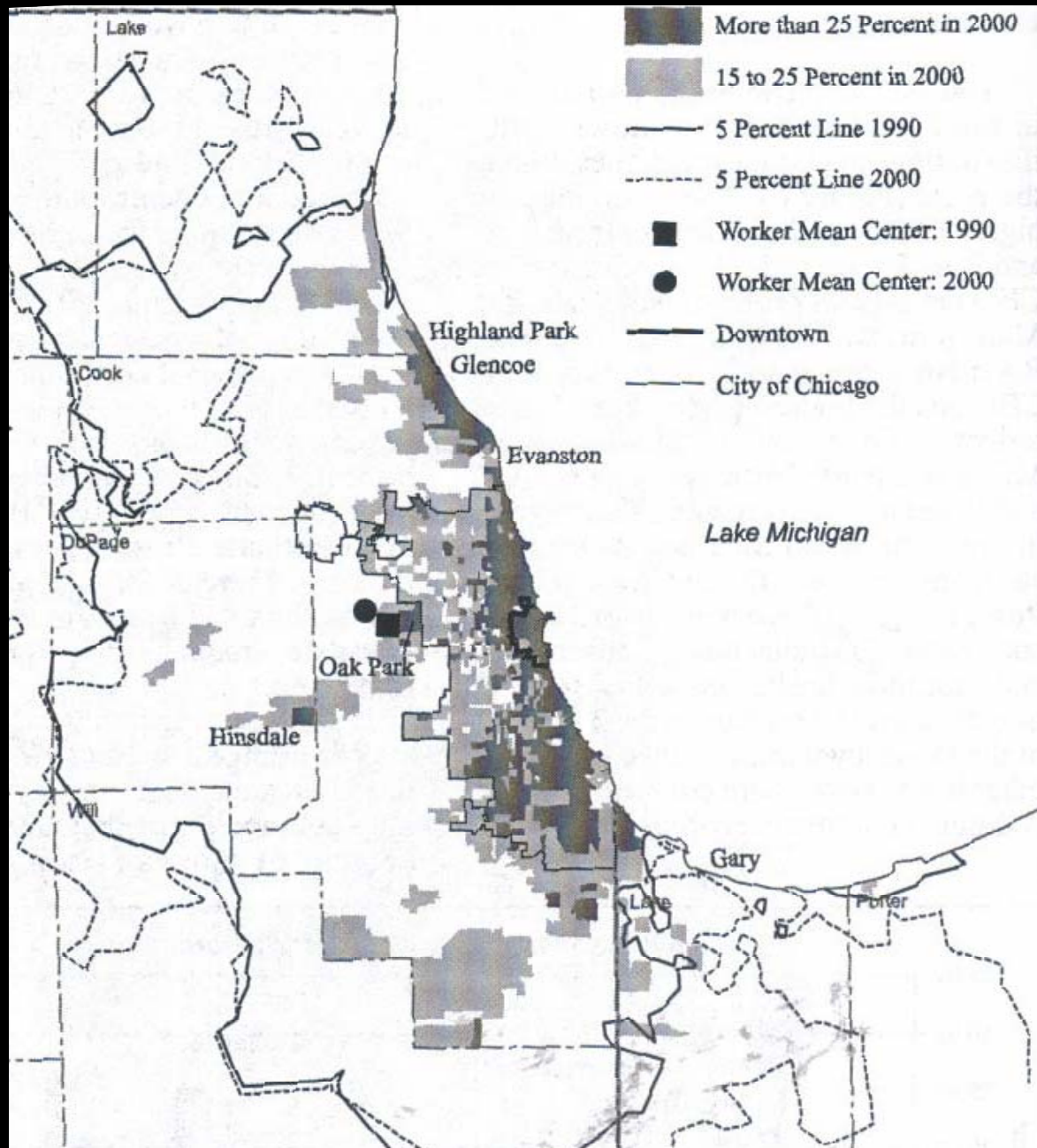
39.1% South Chicago, Calumet Heights, Burnside, South Deering, East Side, Hegewisch



Transportation:
 “ [The Calumet region] is a compage of the nodal type, circulation in and out of the Chicago area being the criterion of homogeneity.”
 (Meyer 1956: 312)

Percent of Workers who Commute to Downtown Chicago

Source: Greene, “Strong Downtowns
 Greene, Bouman, and Grammenos, *C Geographies*

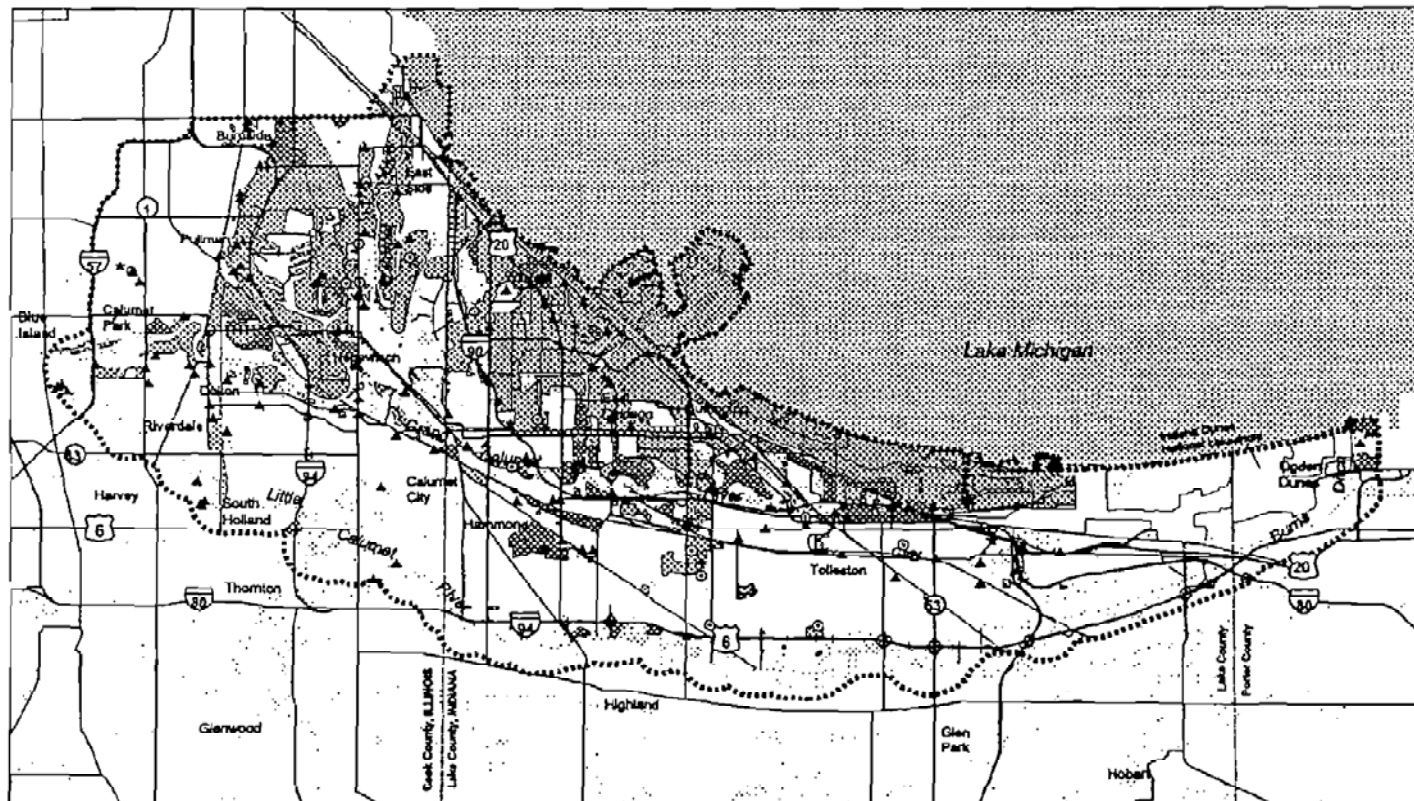


“Out, damn’d spot!” *[Macbeth]*



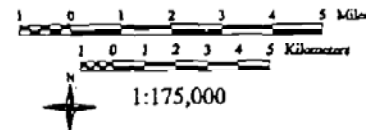
MAP 8: EPA REGULATED FACILITIES, BROWNFIELD SITES, AND FILL AREAS

Brownfield connections



- County Boundaries
- Study Area
- Major Roads
- Rivers and streams
- ▲ EPA Toxic Release Inventory site (TRI)
- EPA Superfund site (CERCLIS)
- ★ Brownfield Recovery Pilot site
- Type of fill deposits
 - Natural Material (includes sand & clay)
 - Other Fill Material (comprised of industrial waste, steel industry waste, dredging spoil, biological sludge, ash and cinders, construction debris, and municipal solid waste)

Calumet Ecological Park Feasibility Study



Data sources: U.S. Geological Survey, U.S. EPA, City of Chicago, Northwest Indiana Brownfields Initiative

Note: Fill data modified from U.S. Geological Survey Water-Resources Investigations Report 96-4126, Characterization of Fill Deposits in the Calumet Region of Northwestern Indiana and Northeastern Illinois, 1997.

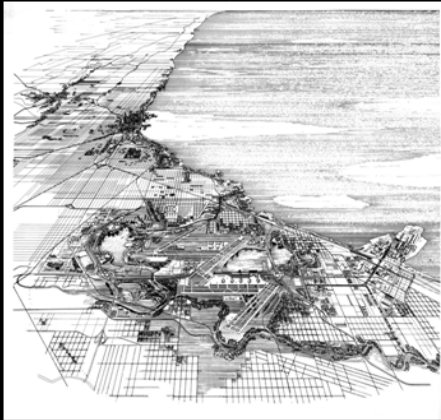
“It smells to heaven” *[Hamlet]*



“Sweet are the uses of adversity”

[As You Like It]

1991:
City of
Chicago
Airport
Plan

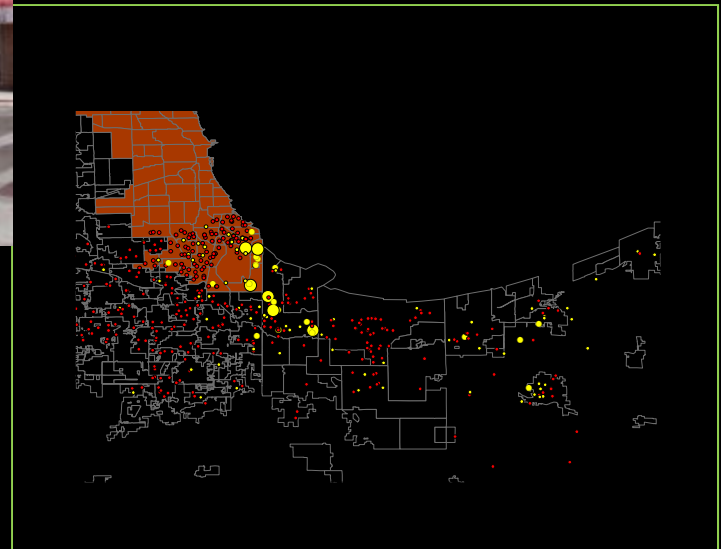
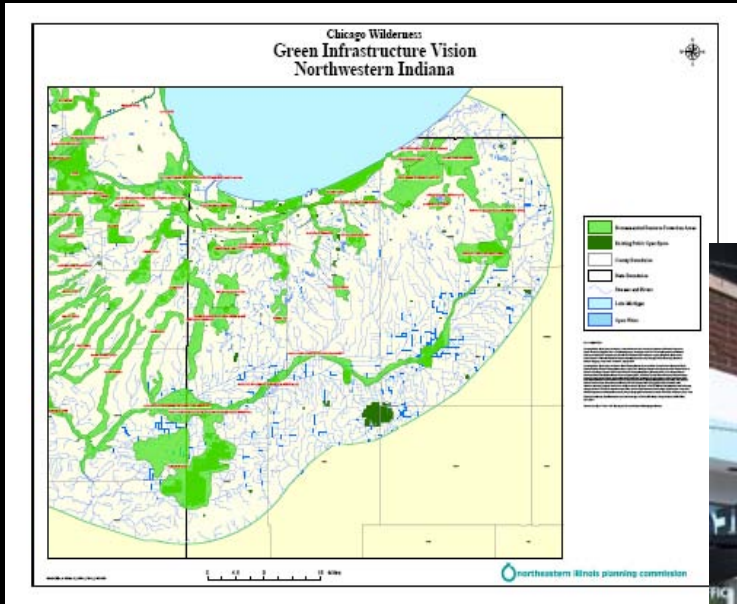


2004: City of
Chicago Open
Space Reserve
Plan

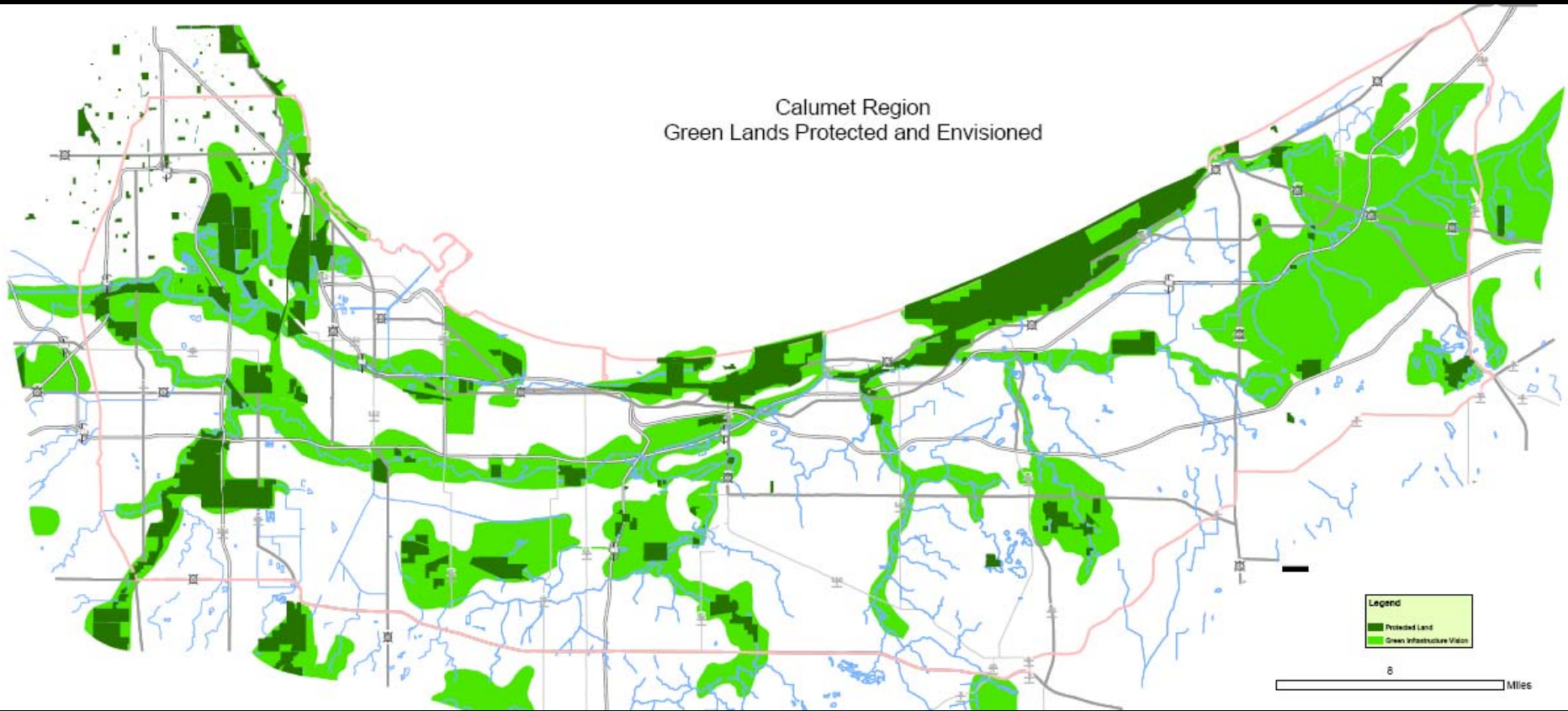


“Our remedies oft in ourselves do lie”

[Alls' Well That Ends Well]



Calumet Region
Green Lands Protected and Envisioned



551,357 total acres
169,723 GIV (30.8% of total)
42,058 protected (7.6% of total)

History as a set of stages

- A wetland area
- Biodiverse
- A re-engineered landscape
- Heavily industrial
- Communities and work
- Deindustrialization
- Brownfields
- Waste disposal and the question of justice
- Large-scale redevelopment
- Grass-roots revitalization

“The past is not dead; it isn’t even past.” *William Faulkner*

A drama and actors exist for each stage

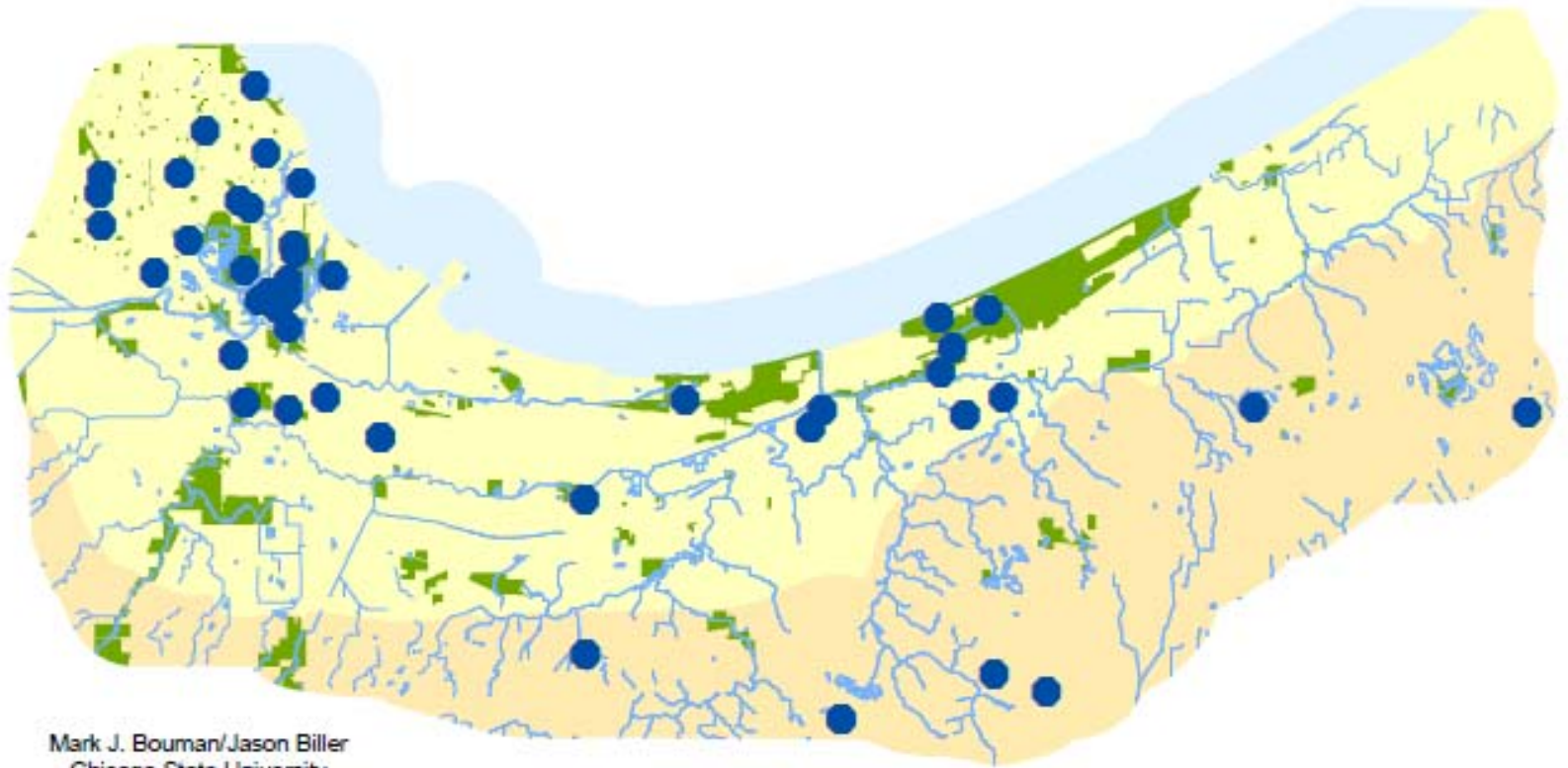
Connections to be made within and between the stages

The Role of the Summits

- Calumet Research Summit 2000
 - Olive Harvey College
 - Outcomes: Research needs prioritized
 - Hydrologic Master Plan
 - Ecotox
- Calumet Research Summit 2006
 - Purdue University Calumet
 - Preliminary connections:
 - Higher education
 - Calumet Stewardship
 - Trail connections
- Calumet Research Summit 2010: Air, Land, and Water Connect
 - Connect Research to Action

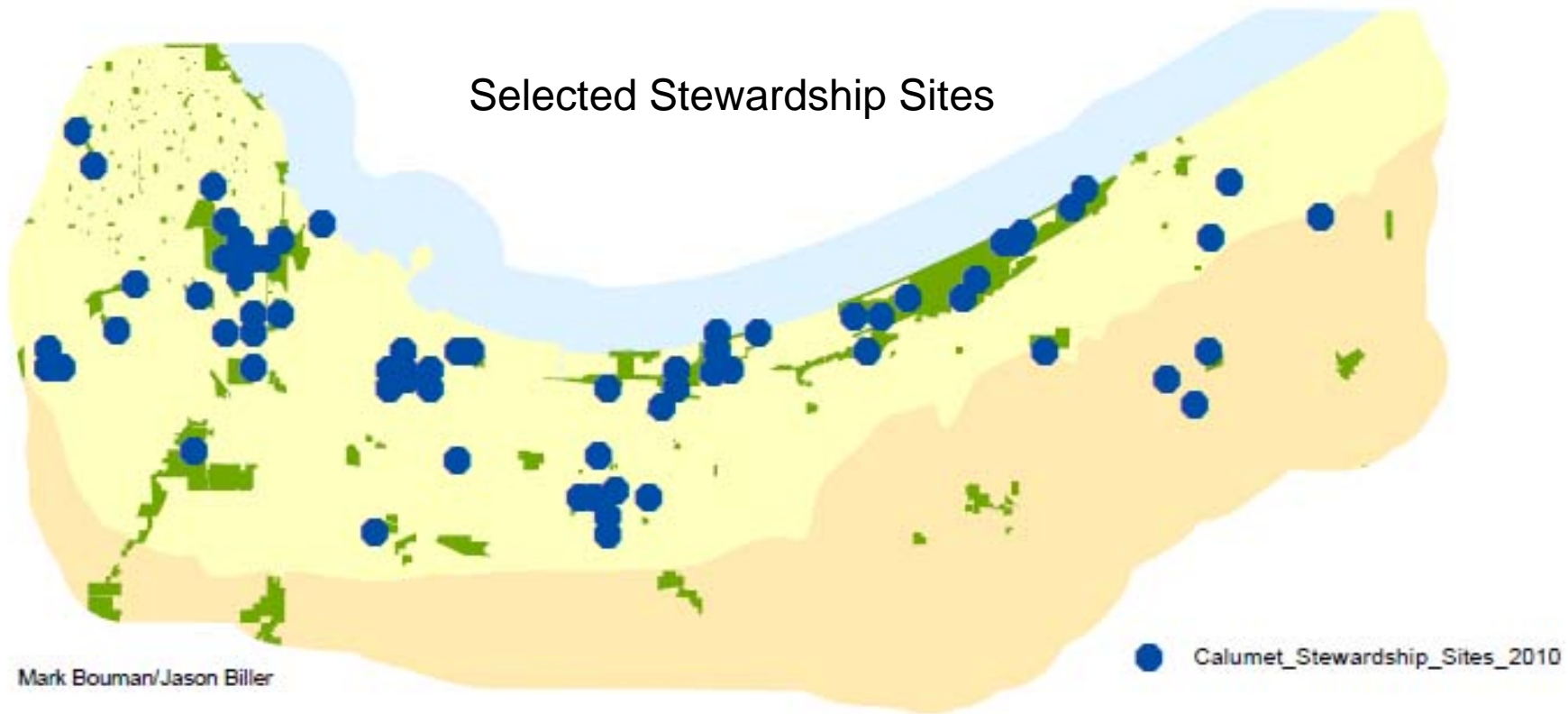
People to people

Environmental Education Providers, 2006



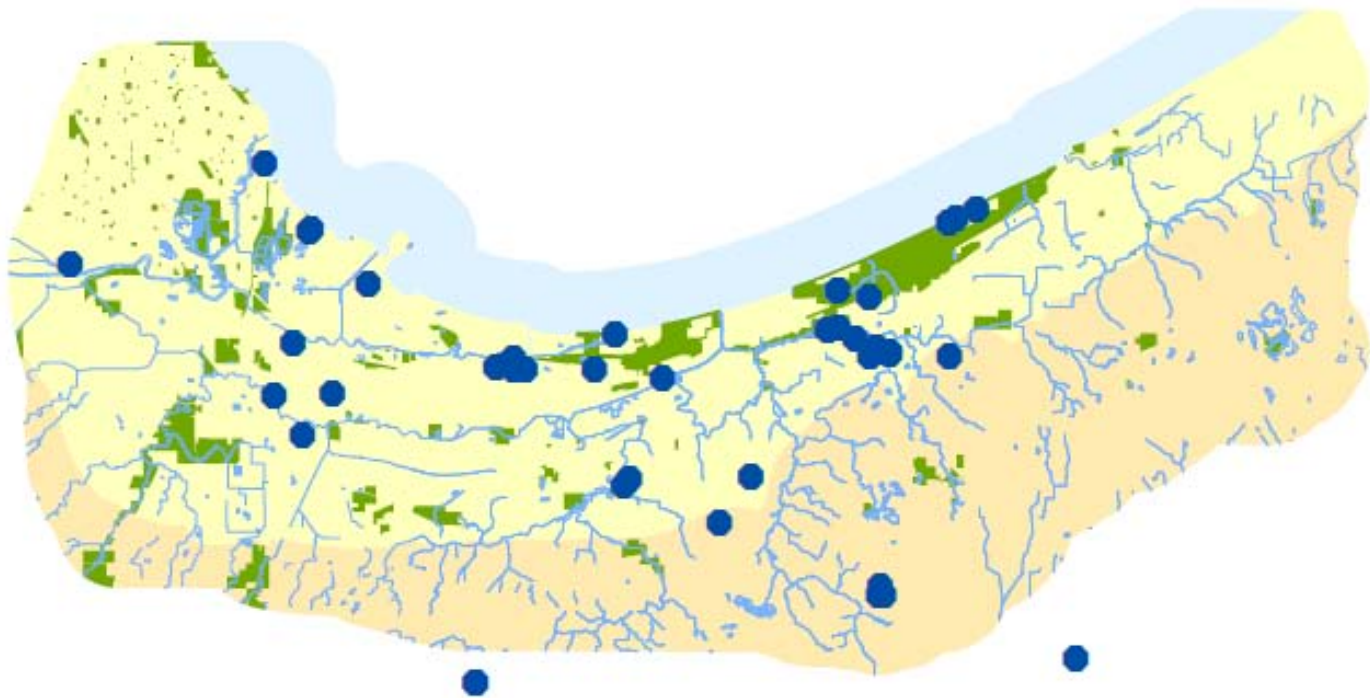
Mark J. Bouman/Jason Biller
Chicago State University

Place to place



Past to future

Calumet Heritage Map: Properties on the National Register of Historic Places



Data Provided by Cynthia Ogorek of Partners in Preservation, Inc.
Map by Mark J. Bouman, Chicago State University

INDUSTRIAL HERITAGE ARCHIVES

of Chicago's Calumet Region



Pullman State Historic Site



Calumet Heritage Partnership



Southeast Chicago Historical Society



The **Industrial Heritage Archive of Chicago's Calumet Region** is an online museum of images that commemorates and celebrates the historic industries and workers of Chicago's Calumet Region, made possible by a Library Services and Technology Act grant administered by the Illinois State Library.

The **Pullman State Historic Site**, the **Southeast Chicago Historical Society**, and the **Calumet Heritage Partnership** (Chicago Steel Heritage Project) have joined together to create this Industrial Heritage Archive.

CONTACT US



SEARCH FOR

Search!

ABOUT US



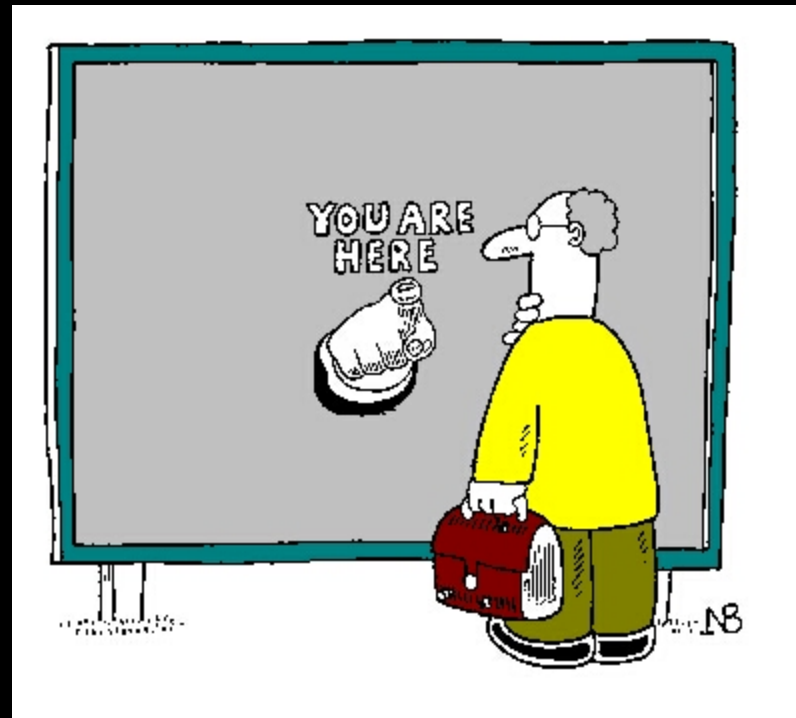
2007 © Industrial Heritage Archives
of Chicago's Calumet Region

Literal and figurative connections in Germany's Calumet: The Ruhr trail of nature and industry



“Only recent quietion fragments no longer, ūr. Mt Forster

1. HOW: How do we define progress on natural resource issues in the Calumet region? What are the biggest barriers to progress and how can we overcome them?
2. WHAT: What needs to happen next (specific actions, specific projects) to advance natural resource conservation efforts in the region? How can current efforts be extended or expanded?
3. WHO: What are you personally interested in working on – by yourself or in collaboration with others? What would your organization be interested in working on? What other partners do we need to engage now?



Mark Bouman
Professor of Geography
Chicago State University
mbouman@csu.edu
773 995 2187